



*Kilmory, Lochgilphead, PA31 8RT  
Tel: 01546605522  
DX 599700 LOCHGILPHEAD  
15 August 2024*

## **NOTICE OF MEETING**

A meeting of the **MID ARGYLL, KINTYRE AND THE ISLANDS AREA COMMUNITY PLANNING GROUP** will be held **ON A HYBRID BASIS BY MICROSOFT TEAMS AND IN THE COUNCIL CHAMBERS, KILMORY, LOCHGILPHEAD** on **WEDNESDAY, 28 AUGUST 2024** at **1:00 PM**, which you are requested to attend.

Douglas Hendry  
Executive Director

## **BUSINESS**

- 1. WELCOME AND APOLOGIES**
- 2. DECLARATIONS OF INTEREST**
- 3. MINUTE OF THE MID ARGYLL, KINTYRE AND THE ISLANDS AREA COMMUNITY PLANNING GROUP, HELD ON 1 MAY 2024 (Pages 5 - 16)**
- 4. COMMUNITY WEALTH BUILDING DISCUSSION**  
Presentation by Chief Executive Officer, Argyll and Bute Third Sector Interface
- 5. CULTURE HERITAGE AND ARTS ARGYLL & ISLES (CHARTS) - HERITAGE ACCESS AND LEARNING ASSISTANT**  
Presentation by Heritage Access and Learning Assistant, CHArts
- 6. POLICE SCOTLAND UPDATE (Pages 17 - 24)**  
Report by Sergeant, Police Scotland
- 7. COMMUNITY FOCUS**
  - (a) **MacTaggart Leisure Centre - Exercise by Referral and Social Prescription**  
Presentation by Projects Manager, MacTaggart Leisure Centre

## **8. CLIMATE CHANGE**

- (a) Kintyre Rainforest Alliance (Pages 25 - 48)

Presentation by Kintyre Rainforest Alliance

## **9. PARTNER UPDATES**

- (a) Scottish Fire and Rescue Service (Pages 49 - 54)
- (b) Forestry and Land Scotland (Pages 55 - 56)
- (c) Argyll and Bute Third Sector Interface (TSI) (Pages 57 - 60)
- (d) Live Argyll - Community Learning Service Update (Pages 61 - 64)
- (e) Member of Scottish Youth Parliament (MSYP) Update (Pages 65 - 66)
- (f) Carr Gomm Update (Pages 67 - 76)
- (g) Caledonian MacBrayne Update (Pages 77 - 78)
- (h) Campbeltown Community Council Update (Pages 79 - 80)
- (i) Ardrishaig Community Council Update (Pages 81 - 82)
- (j) Scottish Canals Update
- (k) Opportunity for Verbal Updates

## **10. ARGYLL AND BUTE HEALTH AND SOCIAL CARE PARTNERSHIP**

- (a) Partner Update - Public Health (Pages 83 - 86)

Report by Health Improvement Lead, Argyll and Bute Health and Social Care Partnership and Alcohol and Drug Partnership Coordinator, Argyll and Bute Health and Social Care Partnership

- (b) Community Link Working (CLW) in Argyll and Bute (Pages 87 - 90)

Presentation by Argyll and Bute Health and Social Care Partnership

- (c) Analogue to Digital Switchover and Telecare Update (Pages 91 - 92)

Report by Tec Lead, Argyll and Bute Health and Social Care Partnership

## **11. SCOTTISH GOVERNMENT PLACE DIRECTORS (Pages 93 - 98)**

Presentation by Place Director, Argyll and Bute/Deputy Director, Adult Social Care Local Improvement and Transformation Division, Directorate for Social Care and National Care Service Development, The Scottish Government

## **12. MOVING ON MID ARGYLL - UPDATE ON FOOD SHARE HUB FOR MID ARGYLL (Pages 99 - 106)**

Presentation by Trustee, Moving on Mid Argyll

- 13. WATER SAFETY SCOTLAND COMMUNICATION TOOLKITS** (Pages 107 - 112)  
Report by Partnerships Lead – Community Planning, Argyll and Bute Council

**14. DATE OF NEXT MEETING**

Wednesday, 6 November 2024

**Mid Argyll, Kintyre and the Islands Area Community Planning Group**

Councillor John Armour (Chair)

Ian Brodie (Vice-Chair)

Contact: Iona Campbell, Senior Committee Assistant; Tel: 01436 658 801

This page is intentionally left blank

**MINUTES of MEETING of MID ARGYLL, KINTYRE AND THE ISLANDS AREA COMMUNITY PLANNING GROUP held ON A HYBRID BASIS IN THE CONFERENCE ROOM, IONAD CHALUIM CHILLE ILE (ISLAY GAELIC CENTRE), ISLAY AND BY MICROSOFT TEAMS on WEDNESDAY, 1 MAY 2024**

**Present:** Councillor John Armour (Chair)  
 Ian Brodie, East Kintyre Community Council  
 Councillor Dougie McFadzean  
 Councillor Garret Corner  
 Melissa Stewart, Democratic Services Manager, Argyll and Bute Council  
 Iona Campbell, Senior Committee Assistant, Argyll and Bute Council  
 Rona Gold, Community Planning Manager, Argyll and Bute Council  
 Antonia Baird, Community Development Officer, Argyll and Bute Council  
 Takki Sulamain, Argyll and Bute Third Sector Interface (TSI)  
 Petra Pearce, Argyll and Bute Third Sector Interface (TSI)  
 Chris Abell, Islay Community Council  
 Sandy Taylor, Islay Community Council  
 Alyson MacGillivray, South Islay Development  
 Muriel MacKaveney, Culture Heritage & Arts Assembly (CHArts), Argyll & Isles  
 Jamie Titterton, Live Argyll  
 Ashley Glen, Kintyre Youth Action Group  
 Dahlia Techner, Kintyre Youth Action Group  
 Jeni West, Forestry and Land Scotland  
 Rory Munro, NHS Highland  
 Caroline McArthur, NHS Highland  
 Craig Baxter, Fyne Homes  
 Martha Smart, Scottish and Southern Electricity Networks (SSEN)  
 Susan Fleming, Colonsay Community Council  
 Station Commander Darren Gibb, Scottish Fire and Rescue Service  
 Valerie Nimmo, Campbeltown Community Council  
 Claire Hay, Colonsay Community Council  
 Sarah Campbell, Argyll Community Housing Association  
 Malcolm Sinclair, Lochgilphead Community Council  
 Ciaran Nairn, Transport Scotland  
 Sgt Matthew Shaw, Police Scotland

**Attending:** Councillor Jan Brown  
 Councillor Robin Currie  
 Councillor Alastair Redman  
 Jamie Joyce, Argyll and the Isles Coast and Countryside Trust (ACT)  
 Thomasina Glover, Islay Development Initiative  
 Kirsten McKenzie, Sidekick – Inclusive Islay and Jura  
 Andrew Galloway, Local Democracy Reporter

**1. WELCOME AND APOLOGIES**

The Chair welcomed everyone to the meeting and general introductions were made.

Apologies for absence were intimated on behalf of:-

Iona MacPhail, Fyne Homes

Kim Ritchie, Moving on Mid Argyll  
MSYP Alasdair Paisley, Scottish Youth Parliament  
Dawn Park, Community Learning Service – Live Argyll  
Linda Tough, Community Learning Service – Live Argyll  
Margaret Wallace, Argyll and Bute Third Sector Interface  
Donald McNeil, Forestry and Land Scotland  
Becky Hothersall, Poverty Alliance  
Beccy Barker, Carr Gomm  
Richard Stein, North Knapdale Community Council  
Olena Mishanina, Argyll and Bute Health and Social Care Partnership  
Graeme Bruce, West Highland Housing Association  
Laurie Piper, Scottish Canals  
Heather Thomas-Smith, Argyll and the Isles Tourism Co-Operative (Wild About Argyll)  
May Cross, Department for Work and Pensions  
Lix Armstrong, Ardrishaig Community Council

## **2. DECLARATIONS OF INTEREST**

There were no declarations of interest intimated.

## **3. MINUTE OF THE MID ARGYLL, KINTYRE AND THE ISLANDS AREA COMMUNITY PLANNING GROUP, HELD ON WEDNESDAY, 31 JANUARY 2024**

The Minutes of the Mid Argyll, Kintyre and the Islands Area Community Planning Group meeting held on 31 January 2024 were approved as a correct record.

## **4. CLIMATE CHANGE**

### **(a) ACT Now**

The Group gave consideration to a presentation from Jamie Joyce, ACT Now Project Manager and Argyll and Bute Climate Action Network (ABCAN) Team Lead. The presentation provided information in relation to ACT Now's local projects, including a community bicycle scheme and outdoor STEM learning projects. It was highlighted that funding was being sought to continue and expand the community bicycle scheme.

Mr Joyce also advised that the ABCAN hub model was now up and running with a delivery team made up from community organisations, freelancers, and ACT employees who were delivering community climate engagement in all 4 administrative areas. The presentation included information on funding distributed to groups looking to act on climate change; the creation of the Argyll & Bute Specific Carbon Literacy Training Course; the delivery of 3 regional climate assemblies, focussing on Energy, Housing, and Food; the new ABCAN website and online network; and the ABCAN Aims for 2024/25.

Discussion took place in relation to the ban on wood-burning stoves in new build homes, and the work of the organisation on the islands.

### **Decision**

The Mid Argyll, Kintyre and the Islands Area Community Planning Group considered and noted the information provided.

(Reference: Presentation by ACT Now Project Manager and ABCAN Team Lead, submitted)

(b) **Argyll and Bute Climate Action: Developing a Climate Strategy and Action Plan for Argyll and Bute**

The Group gave consideration to a report providing an update on the Community Planning Partnership's Argyll And Bute Climate Action project: Developing a Climate Change Strategy and Action Plan for Argyll and Bute.

**Decision**

The Mid Argyll, Kintyre and the Islands Area Community Planning Group noted the approach and status of the project as outlined in the report.

(Reference: Report by Climate Change Project Manager – ACT Now, Argyll and the Isles Coast and Countryside Trust, dated 16 April 2024, submitted)

**5. COMMUNITY PLANNING PARTNERSHIP MANAGEMENT COMMITTEE UPDATE**

The group gave consideration to a report which outlined matters discussed during a meeting of the Community Planning Partnership (CPP) Management Committee held on 10 April 2024. Melissa Stewart, Democratic Services Manager, highlighted the Management's Committee response to an issue raised by the Bute and Cowal Area Community Planning Group in relation to proposals for Greenock Police Station; a proposed new governance structure for the Community Planning Partnership to assist in delivering actions from the Argyll and Bute Outcomes Improvement Plan (ABOIP); updates to the Transport Infrastructure, Housing and Community Wellbeing ABOIP outcomes; and progress with relevant projects, including an update to the Terms of Reference for the Climate Change Working Group.

Rona Gold, Community Planning Manager, provided clarification in relation to discussions about the governance structure of the Community Planning Partnership, having noted some disagreements with the proposals expressed at the Management Committee meeting and within a report that featured on the agenda for this meeting. It was highlighted that no decisions had been made in relation to this matter and partners would be working together to ensure that the meetings taking place were meaningful, and allowed as much time and resource as possible for action and progress on the ABOIP outcomes. It was noted that a development session with CPP partners would be held in June, and details of this session would be circulated to relevant partners in due course.

**Decision**

The Mid Argyll, Kintyre and the Islands Area Community Planning Group considered and noted the contents of the report.

(Reference: Report by Committee Manager, Argyll and Bute Council, dated 1 May 2024, submitted)

**6. UPDATE ON COMMUNITY COUNCIL INTERIM BY-ELECTIONS**

Consideration was given to a report which provided an update on the membership of community councils in the Mid Argyll, Kintyre and the Islands area following the closure of

the nomination period for the interim by-elections. Melissa Stewart highlighted that a large proportion of posts remained vacant in the area.

Discussion took place around the struggles that community councils faced with attracting new community councillors; ways in which community councils could work together to form caucus arrangements; engagement with the Democracy Matters consultation; high workload of community councillors; difficulties with the level of complex process and regulation around community councils; support available for community councils; and the potential requirement for additional visits to community councils to discuss their concerns.

Melissa Stewart and Rona Gold agreed to discuss how they could support community councils in relation to the issues raised following the meeting. It was noted that a meeting between community councils and senior leadership officers at the Council was being arranged, and further details in relation to this meeting would be circulated in due course. Community councils were encouraged to send any suggested agenda items for this meeting to Melissa Stewart.

### **Decision**

The Mid Argyll, Kintyre and the Islands Area Community Planning Group considered and noted the information provided.

(Reference: Report by Governance Officer, Argyll and Bute Council, dated 1 May 2024, submitted)

## **7. COMMUNITY WEALTH BUILDING IN ARGYLL AND BUTE - A FRAMEWORK FOR ACTION**

Consideration was given to a report and presentation in relation to Community Wealth Building. The report confirmed that the Community Planning Partnership (CPP) Management Committee formally received the Community Wealth Building report commissioned in 2023 at its meeting of 10 April 2024. It was highlighted that the recommendations in the report were categorised in five sections: spending; workforce; inclusive ownership; finance; and land and property.

It was noted that the Community Planning Partnership had requested that Area Community Planning Groups provide feedback in relation to the implementation and priority actions identified in the report and appendices.

Discussion took place in relation to the difficulties of retaining wealth within the community, in particular where this may involve large companies and a lot of specialised knowledge to access possible benefits.

### **Decision**

The Mid Argyll, Kintyre and the Islands Area Community Planning group:

1. noted that a steering group of CPP partners oversaw the delivery and production of the two reports at Appendix 1 and 2 of the report;
2. agreed to forward any comments on implementation and priority actions within the final report 'Community Wealth Building in Argyll and Bute: A Framework for Action' at



Appendix 1 by e-mail to Iona Campbell following the meeting for consideration and action where appropriate; and

3. agreed to forward any comments on the implementation and priority actions within the two 'Models of Opportunity' at Appendix 2 by e-mail to Iona Campbell following the meeting for consideration and action where appropriate.

(Reference: Report by Chief Executive Officer, Argyll and Bute Third Sector Interface, dated 1 May 2024, submitted)

**8. ARGYLL AND BUTE HEALTH AND SOCIAL CARE PARTNERSHIP - PUBLIC HEALTH UPDATE: 'THE ANNUAL REPORT OF THE DIRECTOR OF PUBLIC HEALTH: MEDICATION AND PUBLIC HEALTH - DO THE RIGHT THING'**

Consideration was given to a public health update from NHS Highland. The update focussed on The Annual Report of the Director of Public Health 2023 (NHS Highland): 'Medication & Public Health – Do the Right Thing'. The report examined public health challenges and the benefits and drawback of prescribed medicines.

Discussion took place in relation to the benefits of social prescribing; work to reduce the stigma around Hepatitis C; the benefits of making use of local third sector organisations; the role of the local Community Link Worker; the need for GPs to regularly review the medication prescribed to patients; and the need for increased public education around the appropriate use of social prescribing.

**Decision**

The Mid Argyll, Kintyre and the Islands Area Community Planning Group considered and noted the information provided.

(Reference: Report by Health Improvement Senior, NHS Highland, submitted)

**9. MOVING ON MID ARGYLL - A FOOD SHARE OPERATION FOR MID ARGYLL**

The Group gave consideration to a report from Moving on Mid Argyll in relation to the 'A Food Share Operation for Mid Argyll' project. The report provided information in relation to the background and requirement for the project; the process followed to date; funding and equipment required; future key dates; and possible future workstreams. It was noted that a representative from Moving on Mid Argyll had been unable to attend the meeting, but they hoped to provide a presentation at the next meeting of the Group.

**Decision**

The Mid Argyll, Kintyre and the Islands Area Community Planning Group considered and noted the information provided.

(Reference: Report by Trustee, Moving on Mid Argyll, dated 16 April 2024, submitted)

Having noted those in attendance, the Chair agreed to vary the order of business to facilitate scheduled presentations. This minute reflects the order in which items were discussed.

**10. PARTNER UPDATES**

(a) **Police Scotland Update**

Consideration was given to a report from Police Scotland which provided an update on the recent work and activities of Police Scotland within the Mid Argyll, Kintyre and the Islands area. The report included information in relation to management changes and additional resource in the local area; work to reduce instances of youth disorder; and engagement with the Lifelines Scotland project. The update also provided information and literature in relation to the Neighbourhood Watch Scotland initiative.

Sgt Shaw advised that, as a result of increased capacity for community engagement through management changes, he would be happy to explore the possibility of bringing some additional information regarding Police Scotland statistics to a future meeting of the Group. It was agreed that this would be beneficial.

Discussion took place in relation to the importance of partnership working with the Police. The difficulties around recruiting and housing Police staff on Islay, particularly during periods of peak Summer activity, were explored by the Group. Sgt Shaw agreed to feedback these concerns following the meeting.

**Decision**

The Mid Argyll, Kintyre and the Islands Area Community Planning Group considered and noted the information provided.

(Reference: Report by Police Scotland, submitted)

**11. COMMUNITY FOCUS**

(a) **Sidekick - Inclusive Islay and Jura**

The Group gave consideration to a presentation from Sidekick – Inclusive Islay and Jura. The presentation provided information in relation to the background and creation of the Group, as well as the Group's mission statement: 'We will develop projects and resources to enable people with additional support needs on Islay and Jura to live life to the full'. It was highlighted that Sidekick was comprised of volunteers, who juggled the work alongside additional commitments.

Kirsten McKenzie provided examples of Sidekick's projects, including the implementation of an all-terrain wheelchair to allow those with different abilities to use the local beaches; the creation of an all ability bike network on Islay; the co-ordination of a summer activity week; and an appearance on Ben Fogle's Scotland's Sacred Islands television programme.

The importance of co-ordination with other agencies to overcome challenges was highlighted. It was noted that Sidekick were dealing with ongoing work around planning permission for bike sheds; the potential impacts of planned developments; the need for walkways to be accessible; the co-ordination of a pop up café and the logistics around this; and the co-ordination of a significant amount of paperwork to request funding for projects.

It was noted that Sidekick would appreciate assistance from partners in relation to the planning process; improvements in accessibility; funding and the management

of funding requests. Partners suggested that it may be beneficial for Sidekick to liaise with ACT Now and the Council's Sustainable Transport Co-Ordinator in relation to their bicycle scheme.

Councillor McFadzean agreed to liaise with Sidekick in relation to the logistics of the new sensory room being implemented as part of the Council's new Learning Centre on Islay.

The Chair congratulated Sidekick on their work to date, and thanked them for their presentation.

### **Decision**

The Mid Argyll, Kintyre and the Islands Area Community Planning Group considered and noted the information provided.

(Reference: Presentation by Sidekick – Inclusive Islay and Jura, tabled)

## **12. PARTNER UPDATES**

### **(a) Scottish Fire and Rescue Service Update**

The group gave consideration to a report highlighting the Scottish Fire and Rescue Service's (SFRS) FQ4 review of local performance across Mid Argyll, Kintyre and the Islands for the period 2023-24. The report included information on the local firefighter training plan; incidents during this time period; work to reduce call outs for Unwanted Fire Alarm Signals (UFAS); road and water safety campaigns; community engagement activities; the activities of the East and West Dunbartonshire and Argyll and Bute Local Senior Officer; and ways to request a home fire safety visit.

SC Darren Gibb highlighted an online survey which SFRS were carrying out to consider future changes to their operation. It was agreed that a link to the survey would be circulated to the Group following the meeting.

### **Decision**

The Mid Argyll, Kintyre and the Islands Area Community Planning Group considered and noted the information provided.

(Reference: Report by Scottish Fire and Rescue Service, submitted)

### **(b) Argyll and Bute Third Sector Interface Update**

Consideration was given to an update from Argyll and Bute Third Sector Interface (TSI), which provided an update on their work during financial quarter four of 2023-24. The update included information in relation to changes to the Charities (Regulation and Administration) (Scotland) Act 2023; local strategic partnerships; the Community Wealth Building report; Community Planning Partnership organisational changes; the Sector funding for 2024-2025; the Funders Fayre 2024 held in Oban; a fourth year of funding of the Community Mental Health and Wellbeing Fund; TSI Board member recruitment; testing of new models of co-location; work by the Argyll and Bute Climate Action Network; the Sustainable

Food Partnership online event; consultations on a new strategy and a local sustainable funding campaign; research proposal for mapping Argyll and Bute's early intervention services; and TSI's hosting of a Wellbeing Development Manager post, funded by Macmillan Cancer Support and the HSCP.

Petra Pearce invited partners to make nominations to the Argyll and Bute Third Sector Interface Volunteer of the Year Awards.

### **Decision**

The Mid Argyll, Kintyre and the Islands Area Community Planning Group considered and noted the information provided.

(Reference: Report by Argyll and Bute Third Sector Interface, submitted)

### **(c) Campbeltown Community Council Update**

Consideration was given to a report from Campbeltown Community Council which provided an update on welcome progress on the Trench Point Path; continued promotion of a survey in relation to a new Campbeltown pharmacy; and welcome planned improvement works to the road surface on the Esplanade.

Discussion took place around concerns about the negative impacts on local people and businesses as a result of multiple simultaneous road closures on the A83, which were in close proximity to each other.

### **Decision**

The Mid Argyll, Kintyre and the Islands Area Community Planning Group:

1. considered and noted the information provided;
2. agreed to raise concerns about the recent road closures on the A83 with Transport Scotland following the meeting; and
3. agreed to highlight concerns about the recent road closures on the A83 to the Community Planning Partnership following the meeting.

(Reference: Report by Campbeltown Community Council, submitted)

### **(d) Forestry and Land Scotland Update**

The group gave consideration to a report which highlighted the ongoing workstreams of Forestry and Land Scotland within the Mid Argyll, Kintyre and the Islands area. Information was provided in relation to local Land Management Plans; work to combat phytophthora ramorum disease in larch trees; progress with peatland restoration; details of upcoming complex operations; engagement at a STEM event for local high school pupils; and the planned future use of electric vehicles.

Jeni West advised that the Land Management Plan for Carradale had been amended, with an increase to four coupes being felled over the next 12 months. Jeni West agreed to provide details of this to East Kintyre Community Council,

following the meeting.

**Decision**

The Mid Argyll, Kintyre and the Islands Area Community Planning Group considered and noted the information provided.

(Reference: Report by Forestry and Land Scotland, submitted)

**(e) Live Argyll Community Learning Service - Adult Learning Update**

Consideration was given to an update report from the Live Argyll Community Learning Service, which provided an update on Adult Learning. The update included information in relation to different workstreams, including Core Skills for Life Learning and Work; Health and Wellbeing; Digital Skills; and Your Voice. The update particularly highlighted work taking place in the Mid Argyll Adult Learning Hub, on the organisation of a second LGBTQ+ community engagement event. and with the Lochside Enterprise Group; Let's Grow Group; MS Argyll – Snowdrop Give Back Group; and Community Centre Garden Project.

The update also provided details of a celebration of Adult Learning, being held in the Inveraray Inn on the 22<sup>nd</sup> May.

**Decision**

The Mid Argyll, Kintyre and the Islands Area Community Planning Group considered and noted the information provided.

(Reference: Report by Live Argyll Community Learning Service, submitted)

**(f) Member of the Scottish Youth Parliament Update**

The Group considered an update from MSYP Alasdair Paisley in relation to his work as a representative of the Scottish Youth Parliament (SYP). The update included information about MSYP Paisley's training; work on the SYP's National Campaigns, including the identification of the most important topics for young people in Argyll and Bute; and MSYP Paisley's anticipated attendance at the upcoming sitting of the SYP in June.

**Decision**

The Mid Argyll, Kintyre and the Islands Area Community Planning Group considered and noted the information provided.

(Reference: Report by MSYP Alasdair Paisley, submitted)

**(g) Live Argyll Community Learning Service - Youth Learning Update**

Consideration was given to an update report from the Live Argyll Community Learning Service, which provided an update on Youth Work in Kintyre. The update provided information in relation to the work of the Kintyre Youth Action Group; feedback from young people and parents/guardians following the completion of the Friday Night 'Street Sports' Project and Kintyre Youth Filmmaking Project; Kintyre

Youth Action Group's 'GIVE' Easter programme; and participation of Campbeltown Grammar School's pupils in the Dynamic Youth Awards. The update also provided information on regular ongoing projects, as well as scheduled future projects, including the upcoming RainbowFest.

The Chair welcomed Ashley Glen and Dahlia Techner, who were in attendance to provide a verbal update on Kintyre Youth Action Group's recent and ongoing activities, as follows:

"Since the last meeting we have been involved in a few different activities. We recently completed our Easter GIVE programme where we organised and completed local volunteering activities. We delivered fun activities to older people who live in care homes and sheltered housing. We also completed litter picks and made foodbank donations. These were all delivered in both Campbeltown and Tarbert.

We're now getting ready to help run the next annual Rainbowfest event, taking place on June the 8th in Campbeltown. We are currently preparing decorations for the event and organising our arts and crafts activity stalls which we will be delivering on the day. This family friendly event will be held in the Victoria Hall between 11 and 3.

Soon we will begin our training for our Ben Nevis fundraiser in August. We will be climbing Ben Nevis with young people from other Action Groups in Argyll and Bute and raising money for our community projects and youth group activities.

We are also getting ready for our upcoming Kintyre youth consultation. We plan to do these every two years. The last one in 2022 was very useful in helping us and other services to plan projects and activities for local young people. We will be delivering another one later this year with the aim of getting even more young people to complete it."

## **Decision**

The Mid Argyll, Kintyre and the Islands Area Community Planning Group considered and noted the information provided.

(Reference: Report by Live Argyll Community Learning Service, submitted)

### **(h) South Islay Development Update**

The Group considered a newsletter produced by South Islay Development, which provided information in relation to The Ardbeg All Islay Fund; the progress of works at Port Ellen Playing Fields; and a family ceilidh being hosted by Port Ellen Filling Station.

Discussion took place in relation to awards made from the Ardbeg All Islay Fund to a wide variety of projects, as well as the success of the engagement and process around the Fund.

The need for revenue funding to progress the Sonas Childcare project was highlighted as a priority, noting that childcare was an important need for the local

community.

**Decision**

The Mid Argyll, Kintyre and the Islands Area Community Planning Group considered and noted the information provided.

(Reference: Newsletter by South Islay Development, submitted)

(i) **Caledonian MacBrayne Update**

Consideration was given to an update from Caledonian MacBrayne in relation to the progress of works at Kennacraig ferry terminal.

**Decision**

The Mid Argyll, Kintyre and the Islands Area Community Planning Group considered and noted the information provided.

(Reference: Report by Caledonian MacBrayne, submitted)

(j) **Opportunity for Verbal Updates**

No verbal updates were provided.

(k) **Scottish Canals Update**

Consideration was given to an update from Scottish Canals in relation to their planned winter works programme for 2023/24 and reactive works to repair a dummy lock at the Crinan Canal. The update provided information in relation to the work that had been carried out; future planned works; the re-opening of the Canal and car parks; and how to remain up to date with the progress of works at the Canal.

**Decision**

The Mid Argyll, Kintyre and the Islands Area Community Planning Group considered and noted the information provided.

(Reference: Report by Scottish Canals, submitted)

**13. DATE OF NEXT MEETING**

The Group noted that the next meeting of the Mid Argyll, Kintyre and the Islands Area Community Planning Group would take place on Wednesday, 28 August 2024. It was agreed that arrangements would be made to host this meeting in the afternoon.


This page is intentionally left blank



# Area Planning Group Report for Oban, Lorn, Mid Argyll, Kintyre and the Islands

August 2024




Local Policing Priority	What does this mean for your area?	How can you help?
 <p><b>SERIOUS ORGANISED CRIME</b></p> <p>You identified drug dealing / drug misuse as a priority</p> <p>We identified human trafficking as a priority</p>	<p>In tackling Serious &amp; Organised Crime benchmarks are not straight forward. The nature of the crime type is such that we often see the symptom rather than the cause, i.e. an increase in acquisitive crime if heroin were to become a problem in an area, or an increase in Serious Assaults if rival criminal factions are in dispute.</p> <p>For OLI &amp; MAKI area, relevant factors that indicate progress being made in this area are:</p> <ul style="list-style-type: none"> <li>Recorded crimes for 'Possession with Intent to Supply' controlled substances. Up 39% due to better analysis of intelligence and targeted warrants;</li> <li>Prosecutions for 'Possession of Controlled Substances' under the Misuse of Drugs Act. Currently at 64 for the year, anticipated to exceed the 5 year average.</li> </ul> <p>Whilst rising recorded crime in this area is unwanted, the fact that it is rising shows that your local police are looking at it as a priority, putting resources and effort into tackling the issue. Of note, a number of warrants have been undertaken in the past 3 months:</p>	<p>Your local police request your help in tackling Drug related crime by reporting any suspicions you may have either in person or anonymously via 101 or via crime stoppers online:</p> <p><a href="https://www.crimestoppers-uk.org">Crimestoppers in Scotland   Crimestoppers (crimestoppers-uk.org) 0800 555 111</a></p> <p>We rely on communities to provide us with the information that helps us tackle organised crime. Your intelligence is essential in securing warrants. Please, if you see, hear or suspect something, link with us directly or use the above information to voice your concerns. As you can see, your inputs help us take action.</p>


- 12th July, where Officers undertook a warrant in Campbeltown, where 49.5 grams of cocaine was seized (approximate street value of £2,400) alongside £3556.40 in cash;
- 20th June, where Officers undertook a warrant in Campbeltown, where a number of bags were recovered containing white power and green vegetable matter, along with a Taser and Baton.

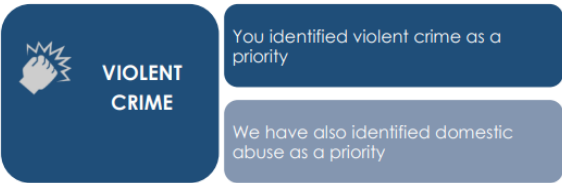
The above two focus on Campbeltown, but Oban continues to be at the forefront of our activity with pro-active plain clothed patrols to combat drug related activity.

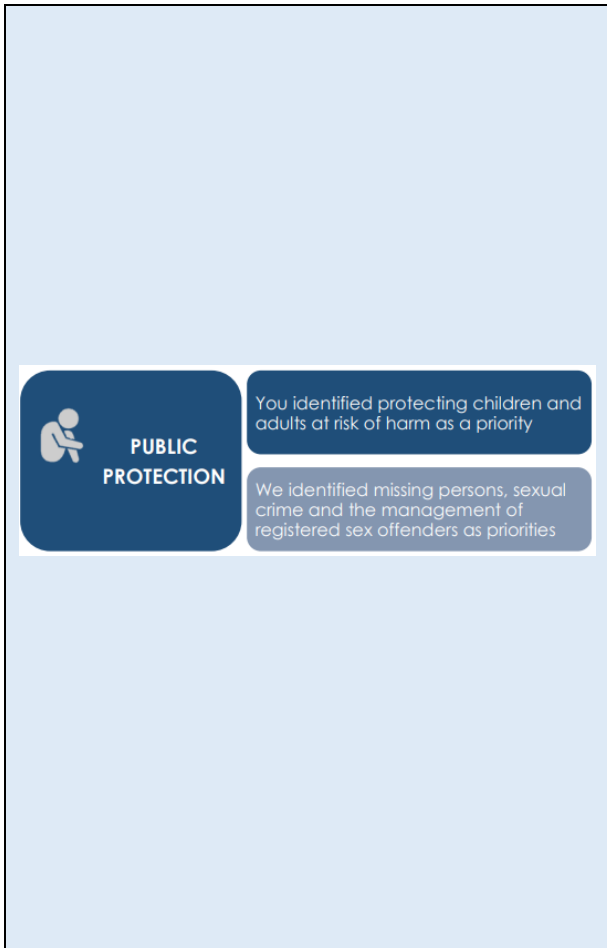
Those present might be aware of recent large-scale seizures this year, with 500kg of Cocaine seized in Hull and 25kg of Cannabis in Glasgow, both connected with organised crime within our area and being trafficked into the country. We continue to work with all agencies to prevent drugs coming into our communities.

Evidence of this partnership approach is seen when looking at the previous 3 months across the whole of Argyll & West Dunbartonshire where 6 people linked to serious and organised crime have been arrested and £301,847 seized under the Proceeds of Crime Act 2002.

 <p>The infographic features a dark blue header with a padlock icon and the text 'ACQUISITIVE CRIME'. Below this, two light blue boxes contain the text: 'You identified homes being broken in to as a priority' and 'We have also identified fraud as a priority'.</p>	<p>Acquisitive Crime encompasses all Theft type crimes, including Housebreaking and Frauds. Crimes such as shoplifting sprees or a series of sheds being broken into can quickly distort figures and risk when analysing this group.</p> <p>On average 120 crimes occur a year (where an avareage is stated, this is based on a 5 year average). We are currenty at 112 recorded crimes, which would indicate us being around the average (or above) by the close of the recording year.</p> <p>Shoplifting has been driven down in the area by 39% through good work targetting offenders early and working with stores where a vulnerability is discovered. However, Frauds, which we have repeatedly sent out advice about, continue to prove difficult to prevent with a 54.5% increase recorded on last year's figures.</p> <p>Why are Frauds difficult to manage/prevent? This crime type is often perpetrated by using technology to access the victim's home, be it on phone or via the World Wide Web. Often the criminals involved are technically advanced and evidentially aware and, most importantly, outside of the jursidiction of the United Kingdom.</p> <p>As a result of that our detection rate in Acquisitive Crime stands at 26.8% for this year. Crimes like Fraud within this group pull down the average, when other crime types like Shoplifting are at 67%. As previously stated, statistics rarely tell the full picture on their own.</p>	<p>Your local police wants members of the APGs to help us by following us on our social media channels and help us spread crime prevention advice and guidance.</p> <p>Fraud Seminars can be provided by the Community Engagement team should you wish. Contct PS Shaw who will pass your details on to the relevant team.</p> <p>Read tips on Argyll &amp; Bute's Trading Standarda Website on practice to protect yourself from the activity of Rogue Traders.</p>
----------------------------------------------------------------------------------------------------------------------------------------------------------------------------------------------------------------------------------------------------------------------------------------------------------------------------------------------------------	-------------------------------------------------------------------------------------------------------------------------------------------------------------------------------------------------------------------------------------------------------------------------------------------------------------------------------------------------------------------------------------------------------------------------------------------------------------------------------------------------------------------------------------------------------------------------------------------------------------------------------------------------------------------------------------------------------------------------------------------------------------------------------------------------------------------------------------------------------------------------------------------------------------------------------------------------------------------------------------------------------------------------------------------------------------------------------------------------------------------------------------------------------------------------------------------------------------------------------------------------------------------------------------------------------------------------------------------------------------------------------------------------------------------------------------------------------------------------	----------------------------------------------------------------------------------------------------------------------------------------------------------------------------------------------------------------------------------------------------------------------------------------------------------------------------------------------------------------------------------------------------------------------------------------------------------------------

 <p>ROAD SAFETY AND ROAD CRIME</p> <p>You identified road safety as a priority</p> <p>We identified drink / drug driving and reducing road casualties as priorities</p>	<p>There are many strands to understanding road safety, from the amount of crimes, to the amount of accidents and injuries that occur upon our network. Police Scotland are one of many partner agencies that contribute to trying to improve the safety of local infrastructure.</p> <p>On average we record 384 crimes on the roads in MAKI and OLI. At the most serious are Dangerous Driving &amp; Drink Drive offences, through to regulatory and speeding offences. Currently, to the year to date we are at 210 crimes, meaning we are on course to be around that average by the end of the year.</p> <p>Of concern in the figures to date is an increase in both Dangerous Driving (35% on last year) and Driving Under the Influence (22% on last year). With regards to the latter, we are yet to reach our peak demand time, being the Christmas period.</p> <p>Though culturally frowned upon and numerous initiatives warning of the dangers and repercussions, driving under the influence of drink/drugs continues to be a problematic crime for our area. Not least because of the risk it places other road users at. It is not a crime undertaken by one clear demographic either, with all ages, genders and holiday makers/local residents alike being involved.</p> <p>In the period for April 2024 to June 2024 we have seen a general decrease in road traffic collisions where serious injuries and minor injuries have occurred. Both categories have reduced by almost 50% when compared with the same period last year.</p> <p>We are saddened to report that death rates from road traffic collisions remain largely the same. For the period detailed</p>	<p>You can help your local Police by reporting anyone who is suspected of drink or drug driving within your community either in person, via 101 or via crime stoppers online:</p> <p><a href="https://www.crimestoppers-uk.org">Crimestoppers in Scotland   Crimestoppers (crimestoppers-uk.org) 0800 555 111</a></p> <p>As said, OLI and MAKI continue to have heightened drink/drug drive figures despite local and national work to address this issue. In light of this, we would like to ask those members of the APG, <i>“What can your local community, organisation or business do to help impact on drink &amp; drug driving?”</i></p>
----------------------------------------------------------------------------------------------------------------------------------------------------------------------------------------------------------------------------------------------------------	-----------------------------------------------------------------------------------------------------------------------------------------------------------------------------------------------------------------------------------------------------------------------------------------------------------------------------------------------------------------------------------------------------------------------------------------------------------------------------------------------------------------------------------------------------------------------------------------------------------------------------------------------------------------------------------------------------------------------------------------------------------------------------------------------------------------------------------------------------------------------------------------------------------------------------------------------------------------------------------------------------------------------------------------------------------------------------------------------------------------------------------------------------------------------------------------------------------------------------------------------------------------------------------------------------------------------------------------------------------------------------------------------------------------------------------------------------------------------------------------------------------------------------------------------------------------------------------------------------------------------------------------------------------------------------------------	-------------------------------------------------------------------------------------------------------------------------------------------------------------------------------------------------------------------------------------------------------------------------------------------------------------------------------------------------------------------------------------------------------------------------------------------------------------------------------------------------------------------------------------------------------------------------------------------------------------------------------------------------

	<p>(April to June), 3 deaths occurred rather than 4 for the previous year, but in July two more motorcyclists tragically passed away as a result of collisions they were involved in on our local trunk roads.</p> <p>We recognise the huge impact these losses have on the communities that we serve and continue to work with our partners to understand ways and practices to drive down these figures, be it through education, awareness, road management or further speed control measures.</p>	
	<p>Violent Crime covers a range of offences from Stalking, Assaults, Domestic Abuse through to the worst offence of Murder. For our area we get, on average, 124 crimes a year for this crime group. It has been noticeable that to date, for this year we are already above this average, recording 155 crimes.</p> <p>Our data shows that this increase in from 2 distinct sources – an increase of low-level common assaults (i.e. a punch or push) and assaults against Police Officers, which has seen an increase of 57%.</p> <p>When you see an increase of both low levels assaults and assaults against Police, this indicates that intoxicants are involved and night time economy (pubs and clubs) are contributing to the issues faced. This correlates with an increase in Threatening &amp; Abusive Behaviour that has also seen a 33% increase on the average, with a 161 offences recorded to date.</p> <p>Though there has been an increase, our detection rate within this area of crime remains strong, with 65.2% of cases successfully charged.</p>	<p>Please help us tackle Violent Crime by reporting any ASB or community concerns either in person via 101 or via crime stoppers online:</p> <p><a href="https://www.crimestoppers-uk.org">Crimestoppers in Scotland   Crimestoppers (crimestoppers-uk.org) 0800 555 111</a></p> <p>As APG members, if you have identified problem areas, ASB hotspots, or licencees that are not acting in a responsible way, please link with us to advise of the problem. We can set up bespoke patrols and use our powers under Licensing Laws to ensure responsible practice. The sooner we are informed about an issue the less chance there is that it grows into an enduring community issue.</p>

 <p><b>PUBLIC PROTECTION</b></p> <p>You identified protecting children and adults at risk of harm as a priority</p> <p>We identified missing persons, sexual crime and the management of registered sex offenders as priorities</p>	<p>This area of public protection spans a number of traditional crime types, including Child Protection, to crimes under Sexual Offences legislation.</p> <p>For our area we get, on average, 37 crimes per year. Currently, for the year to date, we are 10.8% below this threshold, with a notable reduction in physical assaults.</p> <p>This crime area is one that can be problematic when considering detection rates, as reported crimes are often historic, with little available evidence and rely on one person's word against another. Currently this rate is 63.6% for this year.</p> <p>What the above data doesn't show are the multiple protective processes being undertaken every day by specialist units to ensure the safety of our communities. Examples of this include daily Inter-Agency Referral Discussions following reported child concerns, Adult Support &amp; Protection Meetings for identified vulnerable persons in our communities, a dedicated Domestic Abuse Investigation Unit as well as the Sex Offender Policing Unit. There are numerous other departments/initiatives working towards this joint goal of protecting our communities, that I'll highlight the work of in the meetings moving forward.</p>	<p>Members of the APG can help us by reporting any concerns you may have regarding potential victims of Domestic Abuse or vulnerable persons, who may be being exploited or who may just need additional crime prevention support. Again this can be reported through the channels previously discussed, but where serious safety concerns are present, better outcomes are achieved by in person reporting so we can properly understand the risks present.</p>
----------------------------------------------------------------------------------------------------------------------------------------------------------------------------------------------------------------------------------------------------------------------------------------------------------------------	----------------------------------------------------------------------------------------------------------------------------------------------------------------------------------------------------------------------------------------------------------------------------------------------------------------------------------------------------------------------------------------------------------------------------------------------------------------------------------------------------------------------------------------------------------------------------------------------------------------------------------------------------------------------------------------------------------------------------------------------------------------------------------------------------------------------------------------------------------------------------------------------------------------------------------------------------------------------------------------------------------------------------------------------------------------------------------------------------------------------------------------------------------------------------------------------------------------------------------------------------	------------------------------------------------------------------------------------------------------------------------------------------------------------------------------------------------------------------------------------------------------------------------------------------------------------------------------------------------------------------------------------------------------------------------------------------------------------------

### Other relevant news from your local policing teams

**Operation Navette:** Is Police Scotland's response to the ongoing protests/riots taking place around the UK. At the time of writing, I'm pleased to report that our local communities are showing no evidence of these tensions. It is my hope that, by the time I speak at the Planning Groups, this is still the same as, largely, the integrated, localised nature of our communities normally prevents national trends like this from becoming a factor. However, our officers have been conducting community reassurance visits to understand the needs of those we serve and to understand if anyone has any fears or concerns they wish to raise.

**Public Confidence:** Police Scotland routinely seeks to test check satisfaction of service from those that we help. In our most recent survey (covering Argyll and West Dunbartonshire) 68% of those asked were either 'very satisfied' or 'satisfied' with the service they received from Police Scotland. This mirrors rates from last year. We continue to work to improve these figures through training and appropriate supervision, ensuring our dedicated officers provide a high quality of service across the area in all aspects of policing. One of the ways your local team does this is by reviewing all requests for service each day, test checking the action taken, to ensure that the correct response is provided and that our officers conduct themselves in accordance with Police Scotland Policy and Scottish Crime Recording Standards.

In analysing the demand within our policing area it has been determined that a large number of calls stem from residents not knowing which agency they should contact, resulting in linking with the Police as the agency of last resort. The below links are to help channel enquiries to the correct agencies:

#### *Useful Links/Contacts:*

- **Argyll and Bute Community Directory** - <https://abcd.scot/> - this excellent site signposts you to all available services in your area, be it advocacy, counselling, debt advice or animal welfare;
- **Crimestoppers** – [Crimestoppers in Scotland | Crimestoppers \(crimestoppers-uk.org\)](https://www.crimestoppers-uk.org/) 0800 555 111
- **Scottish Partnership Against Rural Crime** – [www.scottishparc.co.uk](http://www.scottishparc.co.uk)
- **Women's Aid** - [Home - Women's Aid \(womensaid.org.uk\)](http://www.womensaid.org.uk)
- **Citizens Advice** – 0808 164 6000 & <https://www.abcab.org.uk/> - Argyll and Bute Citizens Advice Bureau is a local, independent charity which provides free, impartial and confidential advice and information to give you the tools you need to sort out any issues or problems;
- **Argyll and Bute Council Trading Standards** – 01546 605 519
- **Argyll and Bute Council** – <https://www.argyll-bute.gov.uk/my-council/how-contact-us>

- **Transport Scotland** – road related incidents and road closures - <https://www.traffic.gov.scot/traffic-information/incidents>
- **Scottish Water** - <https://www.scottishwater.co.uk/Help-and-Resources/Contact-Us> 0800 0778 778
- **NHS24 (including mental health support)** – 111 or <https://www.nhsinform.scot/>
- **Scam Share Bulletin** [Trading Standards Scotland Bulletin 6 June \(mailchi.mp\)](#)
- **Age Scotland- Demetia Information and help-** <https://www.agescotland.org.uk/>
- **Neighbourhood Watch** - sign up to to receive local alerts and bulletins for your community area - <https://neighbourhoodwatchscotland.co.uk/#0>
- **Scottish Environment Protection Agency (SEPA)** - <https://www.sepa.org.uk/> - for pollution, environmental safety, flooding, waste disposal/carrying enquiries

*Follow us on Social Media and help share local appeals and education messages:*

- Facebook - Police Scotland Argyll and West Dunbartonshire
- X (formerly Twitter) – PSOSArgyllBute and PSOS ArgWestDunb

Report Completed by	Sgt Matthew Shaw on behalf of Area Commander Chief Insp Simon Shanks
Email Address	<a href="mailto:Matthew.shaw@scotland.police.uk">Matthew.shaw@scotland.police.uk</a>



KINTYRE RAINFOREST ALLIANCE

# PRESENTATION TO MAKI CPG

28TH AUGUST 2024

Sarah Moorcroft  
Jenn Lee



# THE AIM OF TODAY'S PRESENTATION

To highlight that Kintyre's Rainforest is internationally important, part of Scotland's rainforest, the biggest remnant rainforest left in the UK.

To enlist this groups support to actively engage with, support and promote the work of Kintyre Rainforest Alliance.



Ancient Oak Tree Clonaig Woods



# KINTYRE'S TEMPERATE RAINFORESTS ARE IMPORTANT IN SO MANY WAYS IMPACTING

- Climate Change
- Biodiversity
- Job Creation
- Health and Wellbeing
- Education and Scotlands heritage and cultural connections



# CLIMATE CHANGE

Temperate Rainforests, with their lichen, bryophytes and ferns are a carbon sink on a carbon sink. They also create their own micro climates, moderating temperatures and rainfall. There is nothing we can do that is more proactive in dealing with climate change than protecting and expanding our rainforests.



# BIODIVERSITY

"I can't wait to return to Kintyre so that I can generate even more records of INTERNATIONALLY important rainforest biodiversity! There is plenty more to discover..."

Oliver Moore - Lichen and Bryophyte  
Expert with Plantlife Scotland



*Pseudocyphellaria norvegica* (Norwegian Specklebelly)



# JOB CREATION

- Ecologists
- Foresters
- Deer Larder Staff
- Tourism
- Access management
- Education
- Project Managers
- Art and craft jobs
- Retail
- Farm and croft diversification

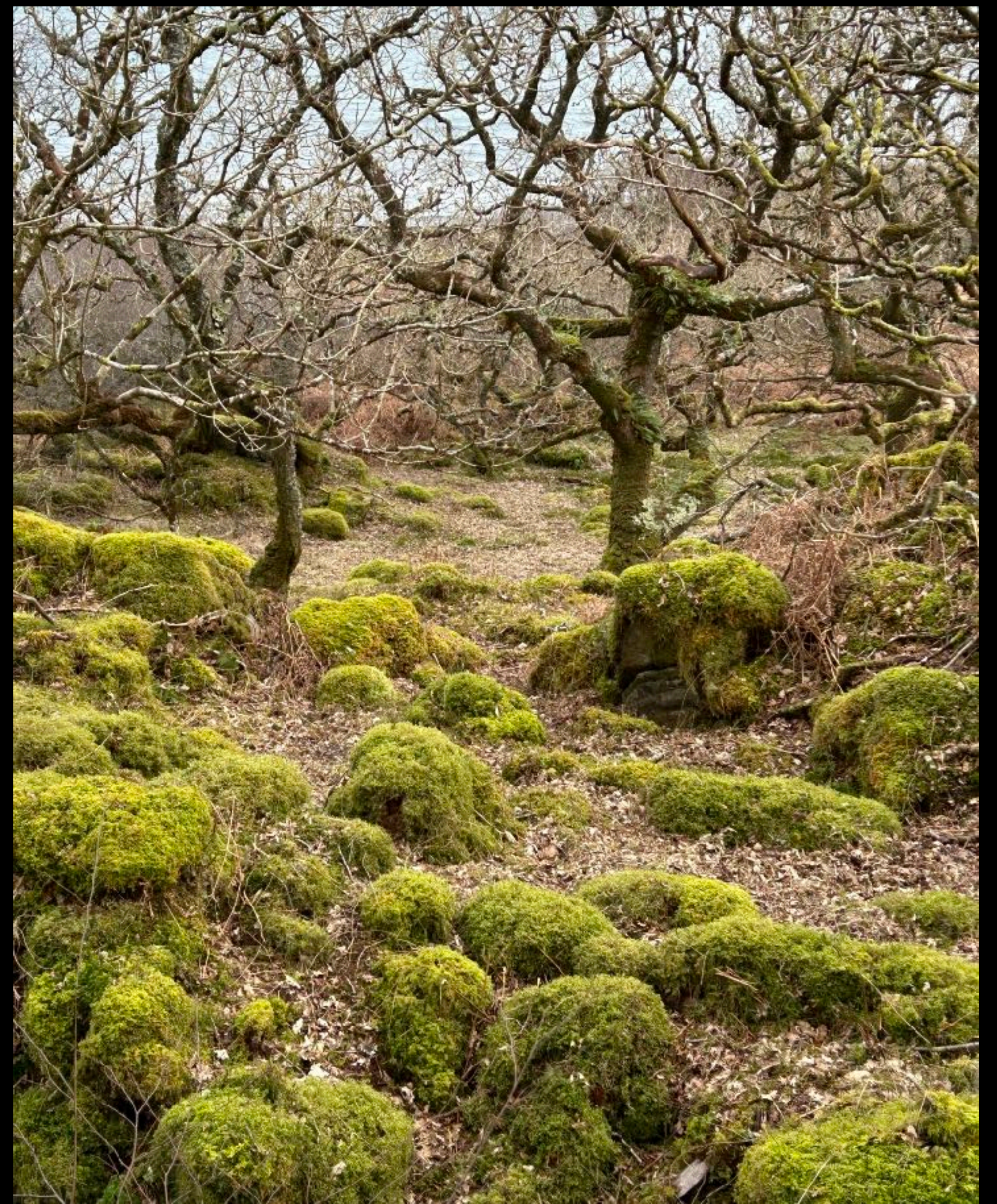
[kintyrerainforestalliance@yahoo.com](mailto:kintyrerainforestalliance@yahoo.com)



Community and Experts coming together to explore the biodiversity of Torrisdale SSSI

# HEALTH AND WELLBEING

- Mental health benefits
- Physical Health benefits



An unmapped woodland in East Kintyre



# EDUCATION, CULTURE, HERITAGE AND TOURISM



Heritage Centre, Carradale





# KINTYRE RAINFOREST ALLIANCE

- Mapping
- Recording
- Putting Kintyre on the map nationally!
- Engaging with communities, MSP's, council staff, The Alliance for Scotlands Rainforest, ACT, The woodland Trust, The native woodlands cooperative, Plantlife Scotland, other rainforest community groups, Community councils, SKDT, CCT, enagging with land owners, and people who are not landowners, speaking to schools, writing grant applications, creating newsletters, running social media feeds, learning, and learning more about Rainforests so that we can share our passion for them.
- What for?

[kintyrerainforestalliance@yahoo.com](mailto:kintyrerainforestalliance@yahoo.com)



The Scottish Governments strategic approach to restoring and expanding Scotlands rainforest

# WHAT ARE WE DOING THIS FOR?

- Because our rainforests are under threat, they will disappear within the next few generations if we fail to take action now.
- Because a legacy that we can all be engaged with is to leave healthy diverse woodlands, flourishing, with their rare and special lichen, bryophytes, plants and animals safe for future generations to be mesmerised by them too.
- And because rainforests bring people together in surprising ways, arguments are forgotten, politics don't matter, history becomes irrelevant, when you fall in love with the rainforests and decide to act you have something to shout about together.



# WHAT DO WE NEED TO DO?

- We need to map our rainforest fragments and document the amazing wealth of species with in them.
- We need to expand and connect rainforest fragments to make them more resilient.
- At a landscape scale we need to remove *Rhododendron ponticum*. It is shading out our native trees, and creating sterile forest floors where nothing else can grow, no bluebells, no mosses, no filmy ferns.
- We need to control herbivores in the rainforest, that means controlling deer numbers. Deer are a much loved and essential part of a flourishing rainforest, but in high and artificial numbers they browse all the new shoots preventing regeneration. We very much want deer, just not so many of them, and we want them to be healthy.



SKDT

# A LANDSCAPE SCALE PROJECT THE EAST KINTYRE BIOSPHERE

- Imagine a Biosphere, a zone where the complex fragments of a whole landscape are reassembled. Restoring a Nature network across our land and sea habitats, reconnecting nature, from cotton grass to Sea Eagle, from Newt to Orchid, from Otter to Emerald Moth.
- The East Kintyre Biosphere journeys from peatland, through the rainforest, on again through species rich grassland and coastal habitats, and reaches the sea. All zones recognised as of significant ecological importance.
- The core of the biosphere is a temperate rainforest remnant Torrisdale Cliffs SSSI, where globally important lichen, bryophytes and ferns can be found.
- This is where restoring Kintyre's Rainforests begins.

The journey starts now.



SKDT

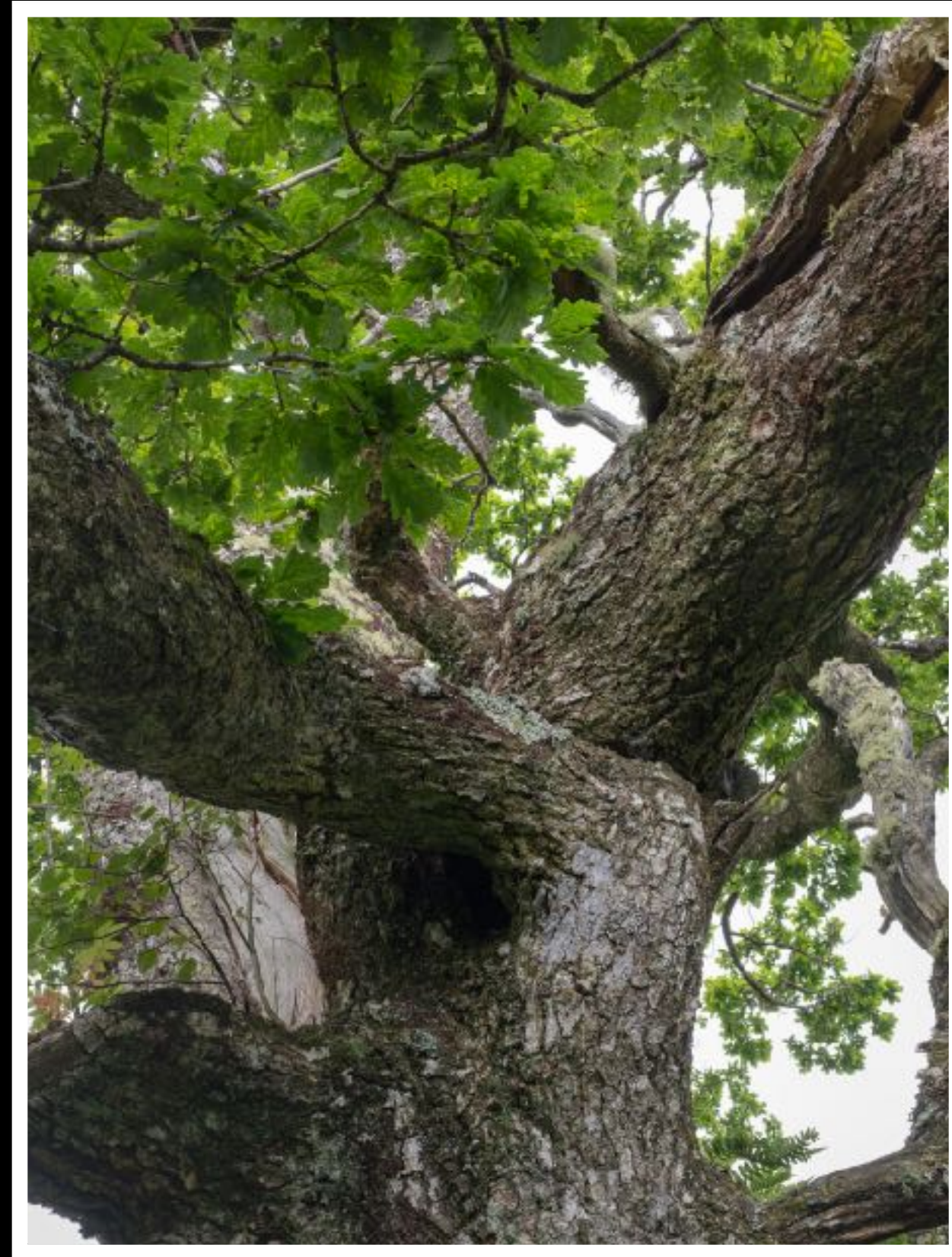
# WHAT DO WE NEED YOU TO DO?

- Give your support to Kintyre Rainforest Alliance and help us to engage meaningfully with local communities across Kintyre, your advice and support will be invaluable.
- Commit to support saving Kintyre Rainforests, talk about them, share what they are with your communities, make sure that they are in LDPs, and biodiversity action plans, consider if as statutory bodies you have them on your estate?
- Add your voices to the national call to ensure that funding is available for restoring the rainforests. In the areas where landscape scale projects are already underway, the benefits to the community have been massive, and people have come together, with new jobs created and volunteering to restore the forest and bringing quality land based jobs back home.
- Make sure that when planning decisions are being made across Kintyre that consideration is given to the impact on these fragile ecosystems. The blocking or diversion of a stream or increase in sediment entering the waterway at the top of a hill, can destroy an entire ecosystem in a gully filled with rainforest rarities miles away downstream.
- Support us in engaging with the council to remove INNS along roadsides and council owned land where we have a landscape scale project taking place.
- Speak to us, we definitely don't know all of the answers, but we have an amazing network of people who do and an active nature loving community behind us.



SKDT

Questions?



[kintyrerainforestalliance@yahoo.com](mailto:kintyrerainforestalliance@yahoo.com)



# LINKS

Alliance for Scotland's Rainforests

<https://savingscotlandsrainforest.org.uk>

ACT - Argyll and the Isles Coast and Countryside Trust

<https://www.act-now.org.uk>

The Woodland Trust - Saving Scotland's rainforest

<https://www.woodlandtrust.org.uk/about-us/where-we-work/scotland/saving-scotlands-rainforest/>

The Scottish Government's strategic approach to restoring and expanding Scotland's rainforest

<https://www.forestry.gov.scot/publications/1586-the-scottish-government-s-strategic-approach-to-restoring-and-expanding-scotland-s-rainforest/viewdocument/1586>

The State of Nature Report 2023

<https://stateofnature.org.uk/countries/scotland/>

Kintyre Rainforest Alliance Facebook page

<https://www.facebook.com/profile.php?id=61556679622357>

Email Sarah and Jenn at : [kintyrerainforestalliance@yahoo.com](mailto:kintyrerainforestalliance@yahoo.com)



# SCOTLAND

From the remote montane habitats of the UK's highest peaks, to the West Atlantic oakwoods, Caledonian pine forests, lochs, coasts and seas, Scotland supports a broad array of wildlife.

[Read the Scotland report](#)

**15%**

**Scottish wildlife has decreased on average by 15% since 1994.**

**47%**

**Since 1970, the distribution of 47% of flowering plants has decreased.**

**11%**

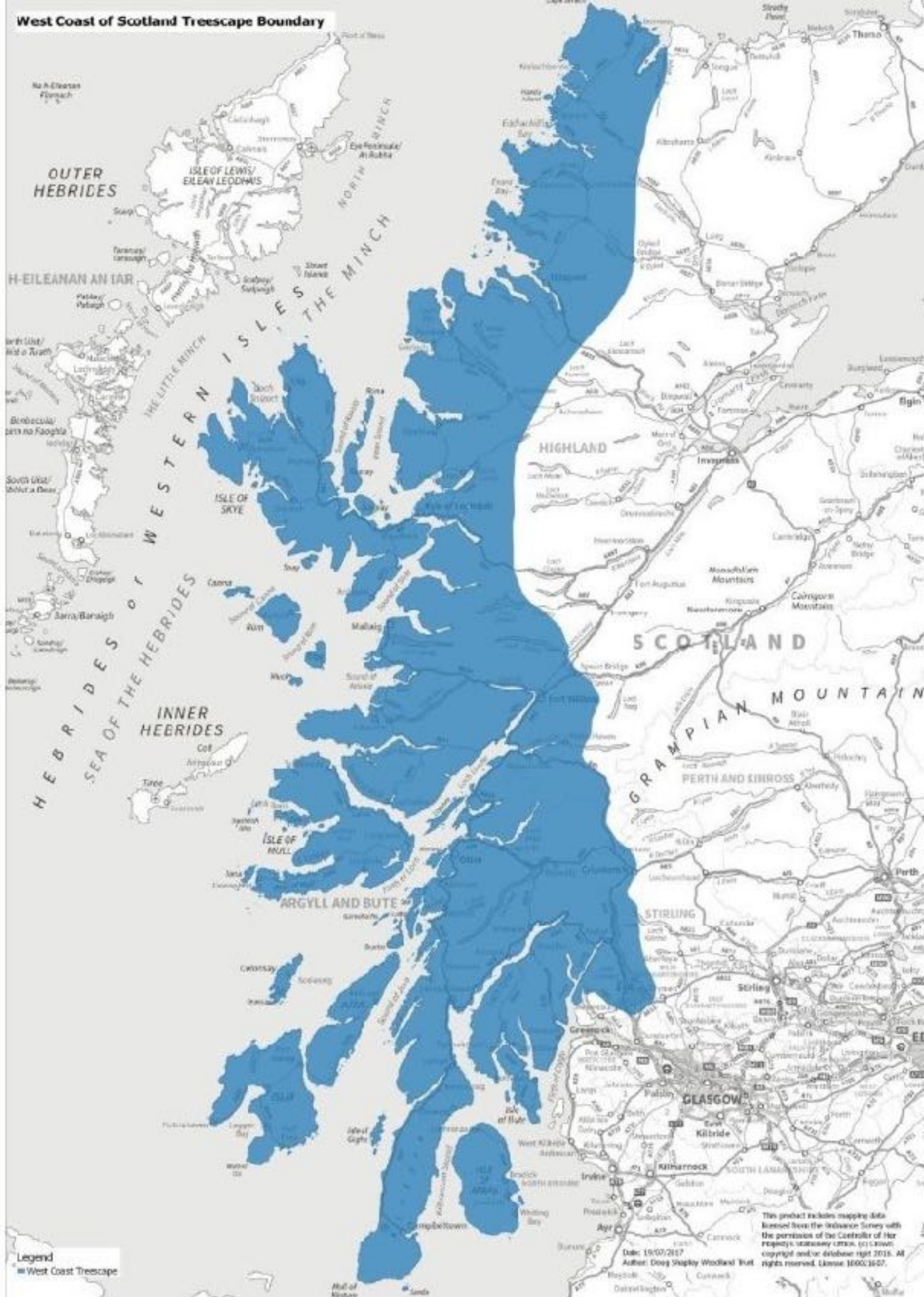
**One in nine (11%) Scottish species are threatened with extinction.**

**49%**

**Scotland's seabirds have declined by 49% between 1986 and 2019.**



# SCOTLAND'S RAINFOREST ZONE



This page is intentionally left blank

## Kintyre Rainforest Alliance (KRA) - additional information

**Scotland's Temperate Rainforest** is one of the rarest habitats in the world, containing some of the world's most vulnerable species of lichen, oceanic bryophytes, and fungi, recognised as areas of global importance. Restoration of the Argyll rainforests including those of Kintyre can contribute to Scotland meeting its biodiversity targets as well as contributing to achieving the 2045 Net-Zero targets by sequestering atmospheric carbon dioxide in long standing natural woodlands.

For centuries, Temperate Rainforest covered our Kintyre peninsula. This was connected to a massive forest stretching across the Western edge of Britain and Ireland. Rich in trees covered in rare mosses, lichen and ferns, including some of the world's rarest species, these forests still exist in small fragmented pockets in Kintyre. It is our ambition to work with our local community to restore and regenerate these rainforest fragments to a healthy, vibrant woodland, connected to our northern neighbour Knapdale. This will create a rainforest corridor along the East Coast of Kintyre, allowing native wildlife to travel freely, breed and flourish. In addition we will restore and regenerate the smaller fragments that exist in the south and west of Kintyre where hidden fragments of ancient woodlands still cling on to steep inaccessible gullies. Working with other agencies and partners, with the support of our community, local landowners, farmers and crofters, advocates and politicians both within and outside Kintyre, we will ensure that our Kintyre rainforests will be bigger, and in better condition, able to naturally expand and connect between fragments, have more resilience and diversity of trees, and other native flora and fauna protecting the new growth forests as they develop. Ensuring that our rare species of mosses, liverworts and lichens have room to grow and expand. We will create new jobs for the local community, bringing in new skills, training a new generation of local people in rainforest management and creating opportunities for our children and young people to live productive and engaging lives on the Kintyre Peninsula.

Kintyre Rainforest Alliance (KRA) will act as the environmental stewards of our local rainforests, driving restoration, regeneration and long term protection of the Kintyre rainforests.

We will do this by championing

- the importance of Kintyre rainforests in the fight against climate change.
- The importance of Kintyre rainforests for global, national, and local biodiversity.
- The importance of Kintyre rainforests as a key ecosystem in the Kintyre Biosphere
- The importance of Kintyre rainforests for the physical and mental health and wellbeing of the local population.
- The importance of Kintyre rainforests for tourism, art and culture in Kintyre.

We will achieve this by

- Providing and delivering education to local residents and visitors on the existence, importance and complexity of Kintyre's rainforests, and the vulnerable eco-system that sustains them.
- Collaborating with individuals and organisations that share our vision and can help us to deliver our objectives.

[kintyrerainforestalliance@yahoo.com](mailto:kintyrerainforestalliance@yahoo.com)

- Directly engaging with all persons, organisations or activities that will promote and protect Kintyre's rainforests and the eco-systems that sustain them.
- Supporting the creation of forest based jobs, apprenticeships and on going training and research that provide positive benefits to the long term sustainability of the Kintyre rainforests.
- Engaging with ethical organisations and individuals whose aims align with ours and can support KRA with funding or support to deliver key milestones in the regeneration, protection and promotion of Kintyre rainforests

## **Our Organisational Structure**

KRA is working as a project aligned with South Kintyre Development Trust (SKDT).

## **Current Funding applications**

KRA has a funding bid for **Nature Restoration Fund** with Nature Scotland. Following a successful Expression of Interest (EOI), KRA has been invited to and has submitted a development stage bid, which will allow mapping and scoping of the landscape scale bid. The geographical area for this landscape scale project is from Carradale Bay to Bunlarie Woods, Saddell. This is what is referred to in the presentation as the East Kintyre Biosphere. A successful project here will pave the way for further projects to be developed elsewhere in Kintyre.

KRA also has a smaller bid in through the **Neighbourhood Ecosystem Fund**, which will allow for training and development, education, community events and numerous other aligned activities. If successful, these can start as soon as funding is allocated. Proposals for activities aligned to the East Kintyre Biosphere are outlined in the table below.( \* )

## **Useful Links on Scotlands Rainforests**

### **Alliance for Scotland's Rainforests**

<https://savingscotlandsrainforest.org.uk>

### **ACT - Argyll and the Isles Coast and Countryside Trust**

<https://www.act-now.org.uk>

### **The Woodland Trust - Saving Scotland's rainforest**

<https://www.woodlandtrust.org.uk/about-us/where-we-work/scotland/saving-scotlands-rainforest/>

### **The Scottish Governments strategic approach to restoring and expanding Scotland's rainforest**

<https://www.forestry.gov.scot/publications/1586-the-scottish-government-s-strategic-approach-to-restoring-and-expanding-scotland-s-rainforest/viewdocument/1586>

### **The State of Nature Report 2023**

<https://stateofnature.org.uk/countries/scotland/>

### **Kintyre Rainforest Alliance Facebook page**

<https://www.facebook.com/profile.php?id=61556679622357>

[kintyrerainforestalliance@yahoo.com](mailto:kintyrerainforestalliance@yahoo.com)

Email Sarah and Jenn at : [kintyrerainforestalliance@yahoo.com](mailto:kintyrerainforestalliance@yahoo.com)

Plantlife Scotland

<https://www.plantlife.org.uk/our-work/government-action-for-temperate-rainforests/>

### YouTube Videos



\* NEF Bid activity proposal

What	How	Timeline
Knowledge Building and Exchange	Site visits to similar projects or people/organisations from which we can learn.	Continuous as per opportunities, but targeted visits in first two months to Appin, Craignish and Milport
Encouraging engagement and learning	<p>Hosting wide-ranging open information sessions for schools and groups</p> <p>Developing learning resources, including local identification guides and investment in Plantlife guides.</p> <p>Discover Research Vessel coming to Carradale to deliver STEM based education to primary school</p> <p>Delivery of tailored STEM sessions on rainforests, salt marsh and sea grass to Kintyre schools.</p> <p>Community Art Exhibition incorporating photography, painting, mixed media works</p> <p>Rainforest Soundscape Experiences in Carradale, Torrisdale and Campbeltown by local sound artist.</p>	<p>Throughout the 12 months, beginning in Carradale, but extending to Torrisdale, Peninver and Campbeltown.</p> <p>ASAP, with continuous updates as required.</p> <p>As weather permits</p> <p>Within 12 months as per schools' timetables.</p> <p>Launch ASAP with exhibition of completed works towards the end of 12 months.</p> <p>NEF funds will not in any way directly fund the individuals involved, but will assist with promotion.</p>

[kintyrerainforestalliance@yahoo.com](mailto:kintyrerainforestalliance@yahoo.com)

<p>Education and Capacity Building</p>	<p>Tree Identification Sessions tailored to all ages and held in urban woods and local rainforests.</p> <p>Rainforest and Coastal survey training for volunteers:</p> <ul style="list-style-type: none"> <li>· Lichen, Bryophyte and Fern identification</li> <li>· Seabed Survey Training</li> <li>· Salt Marsh Identification, Assessment and Survey Training</li> <li>· Bug Life Training and ID sessions for River Sampling</li> <li>· Rapid Rainforest Assessment Training</li> </ul>	<p>Beginner sessions at start and continuing through to intermediate training.</p>
----------------------------------------	--------------------------------------------------------------------------------------------------------------------------------------------------------------------------------------------------------------------------------------------------------------------------------------------------------------------------------------------------------------------------------------------------------------------------------------------------------------------------------------------	------------------------------------------------------------------------------------

Email Sarah and Jenn at : [kintyrerainforestalliance@yahoo.com](mailto:kintyrerainforestalliance@yahoo.com)

This page is intentionally left blank



**Working together  
for a safer Scotland**



**SCOTTISH  
FIRE AND RESCUE SERVICE**  
Working together for a safer Scotland

# **Mid Argyll, Kintyre and the Islands CPG Briefing Report**

## **Q1 2024/25**

## **Performance & Activity Report**

<b>From:</b>	<b>1<sup>st</sup> April 2024</b>	<b>To:</b>	<b>30<sup>th</sup> June 2024</b>
--------------	----------------------------------	------------	----------------------------------

## Introduction

Welcome to the Scottish Fire and Rescue Service Community Board Performance Report. This performance report is designed to provide citizens, stakeholders and partners with information relating to Community Board based activity undertaken by the Scottish Fire and Rescue Service.

Whilst using historic statistical benchmarking data, consideration must be taken of the random nature of fire related incidents and events, and how this can pose difficulties in interpreting emerging patterns and trends. This is of specific relevance where Community Board level data is analysed due to the relatively small number of actual incidents/events that occur in Community Board areas.

However, regardless of statistical anomalies, emerging patterns and trends in fire related incidents and events can assist the Scottish Fire and Rescue Service and Community Planning Partners plan and implement preventative intervention initiatives to target reducing fire related incidents and events.

## Local Firefighter Training Plan

Below is a list of subjects the operational crews have been focusing on within this period. Each subject has been covered both practically and theoretically and recorded in the Fire Service Training recording system.

	April/May/June
Training subjects	<ul style="list-style-type: none"> <li>• CFBT</li> <li>• Water Awareness</li> <li>• Safe Working at Height</li> <li>• RTC and Extrication</li> <li>• Knotts, Ladders &amp; Pumps</li> <li>• Secure Accommodation</li> </ul>

## Accidental Dwelling Fires (ADF)

Ward	3 Year Average	2023/24	2024/25
Kintyre & the Islands	6.7	15	5
Mid Argyll	4.3	5	4
South Kintyre	3.3	3	4
<b>Community Board Total</b>	<b>16</b>	<b>23</b>	<b>13</b>

## ADF Casualties

Ward	3 Year Average	2023/24	2024/25
Kintyre & the Islands	0.3	0	0
Mid Argyll	0.3	0	0
South Kintyre	1	1	1
<b>Community Board Total</b>	<b>1.7</b>	<b>1</b>	<b>1</b>

## Deliberate Secondary Fire Setting

Ward	3 Year Average	2023/24	2024/25
Kintyre & the Islands	0.3	1	0
Mid Argyll	1	0	0
South Kintyre	0	0	0
<b>Community Board Total</b>	<b>1.3</b>	<b>1</b>	<b>0</b>

## Fires in Non-Domestic Property

Ward	3 Year Average	2023/24	2024/25
Kintyre & the Islands	1	3	0
Mid Argyll	0.7	0	1
South Kintyre	0.7	0	1
<b>Community Board Total</b>	<b>2.3</b>	<b>3</b>	<b>2</b>

## Casualties from Non-Fire Emergencies

Ward	3 Year Average	2023/24	2024/25
Kintyre & the Islands	0	0	0
Mid Argyll	0	0	0
South Kintyre	0	0	0
<b>Community Board Total</b>	<b>0</b>	<b>0</b>	<b>0</b>

## Unwanted Fire Alarm Signals

Ward	3 Year Average	2023/24	2024/25
Kintyre & the Islands	10.7	12	3
Mid Argyll	13.7	20	5
South Kintyre	5.7	8	3
<b>Community Board Total</b>	<b>30</b>	<b>40</b>	<b>11</b>

## **Incidents/Activities of Note**

### **Unwanted Fire Alarm Signals (UFAS)**

We continue to work with partners across Argyll & Bute to support duty holders in reducing unwanted fire alarm signal (UFAS) incidents. Our UFAS mobilisation policy has been devised with the aim of reducing UFAS incidents across Scotland. This has been reflected in the relevant KPI's contained within this report.

### **Road & Water Safety campaigns**

In this reporting period, we have continued to work with various partners across Argyll & Bute including Police Scotland, The RNLI (Royal National Lifeboat Institution) and local business on Road and Water safety campaigns. We continue to support a road safety governance group established with Police Scotland's L Division. The group meets on a quarterly basis to discuss road safety issues and includes various partners from across Argyll & Bute.

We continue to participate in Partnership Approach to Water Safety (PAWS) and attend Argyll & Bute quarterly meetings. Our Community Action Team (CAT) and local crews have been delivering Water Safety Scotland water safety presentations across schools in Argyll & Bute.

### **Community Engagement Activities**

- Post Domestic Incident Response (PDIR) following every domestic incident
- Community Action Team (CAT) visited various Caravan and campsites offering appropriate fire safety advice
- Fire, Water & Road Safety provided to schools and local community groups.
- Continue to deliver Fire Safety advice via HFSVs (Home Fire Safety Visits) and provision of smoke detection
- Representation on Multi Agency Risk Assessment (MARAC) for those affected by domestic violence
- Continue to support 'Make the Call' campaign and On Call recruitment drive for retained and volunteer stations within Argyll and Bute
- Supporting Partnership Approach to Water Safety (PAWS) group and engaging with the public: #RESPECTTHEWATER campaign
- Engaging with communities utilising spring/summer Thematic Action Plans TAP
- Victim support referral pathway set up
- Establishing "Referral Pathways" with our partnership agencies. Empowering new referral groups to help us arrange Home Fire Safety Visits for some of our most vulnerable groups in our communities.
- Our Area Management personnel were joined by SFRS (Scottish Fire and Rescue Service) Board Member Paul Stollard, as we carried out our National Public Pre-consultation on the future of SFRS. Participation from members of the public who engaged with us at Tesco Oban and at Oban Community Fire Station.
- Our CAT visited various high schools in the MAKI area including a careers day event at Campbeltown and Blue light Day at Tarbert Academy.
- Our CAT continue to engage with primary schools on road and water safety presentations including Strath of Appin, Glassary, Tayvallich and Rhunahaorine Primary Schools

### **EWDAB (East & West Dunbartonshire, Argyll, and Bute) LSO Activities**

- West SDA (Service Delivery Area) development event at INEOS, Finnart Ocean Terminal. Attended by DACO (Deputy Assistant Chief Officer) Wright and several senior officers from EWDAB LSO. This was a fantastic opportunity to learn more about our local risks, while strengthening partnerships through shared understanding.

- Continued roll out of new fleet SFRS Electric Vehicles and on-station charging points within the area
- In June, WC McGloin & CSA McLean Fleming attended the DYW (Developing the Young Workforce) conference at Coran Halls in Oban. Allowing partners from across Argyll & Bute to discuss ideas on how to support our young people from attracting women into STEM (Science, Technology, Engineering and Math's) to mentoring through MCR pathways.
- Staff from EWDAB LSO tested SFRS Continuity Plans at our annual exercise. Following familiarisation input from Civil Contingencies Officer Cameron Black. We were joined by representatives from Argyll & Bute Council, who provided valuable input and feedback.
- LSO McKay and the wider team at EWDAB were happy to celebrate our On Call colleague, Lorraine Taylor, who was recognised in the Kings Birthday Honours for 2024, for her exemplary service to her community.

### **Home Fire Safety**

As part of our commitment to building a safer Scotland we offer everyone in Scotland a free home fire safety visit. We will help you sort out a fire escape plan and provide information about smoke, heat, and carbon monoxide alarms.

**For a Free Home Fire Safety Visit, please:**

- Call [0800 0731 999](tel:08000731999)
- Text "FIRE" to 80800 from your mobile phone.

**Twitter link:** <https://twitter.com/abewdhq>



# Forestry and Land Scotland (FLS) update August 2024

## Land Management Plans (LMPs)

### Beinn Ghuilean

- LMP with SF for approval, on the public register July 2024.

### South Knapdale

- Scoping underway, consultation events planned for Autumn 2024.

### East Loch Awe

- Scoping underway for LMP revision.

### Ormaig & Salachry

- Consultation planned for September 2024, delayed due to General Election;  
Thursday 5<sup>th</sup> September. 4pm-7pm. Craignish Hall, Ardfern  
Monday 9<sup>th</sup> September. 4pm-7pm. Living Stones, Kilmartin

## Larch- *Phytophthora ramorum*

Deer Hill felling to commence autumn 2024 following holiday period.

*P. ramorum* spreading through West Loch Awe.

Specific project to manage young/mixed larch crops, operation commencing autumn 2024 in Ardcastle.

## Peatland restoration

Peat restoration works near completion at Tangy windfarm, Lussa.

Ongoing operations at An Suidhie Windfarm in Eredine, East Loch Awe.

## Upcoming “complex” operations

### Beinn Ghuilean felling

Programmed to begin felling autumn 2024 subject to further site investigations and LMP approval.



### **Dunardy Face, Knapdale felling**

Delayed until 2025 due to planning restrictions and complex operations requiring specific resources.

### **Other information**

- West Region specific recruitment to commence for Forester and Works Supervisor roles.



## Argyll and Bute Third Sector Interface

Update to MAKI ACPG 28<sup>th</sup> August 2024

TSI activity for quarter one 2024-2025 has involved completing the final version of the TSI funded Community Wealth Building report, supporting member organisations and the wider community through the council and IJB budget processes as well as planning for our next business plan and new strategy.

### **Scottish Government, Parliament, the TSI landscape and policy activity**

Charities and funders have been urged to take part in a new Scottish Parliament inquiry aimed at enhancing the efficiency of the public funding process.

Holyrood's Social Justice and Social Security Committee has launched a consultation on third sector funding and wants to understand what can be done to make the process more efficient, so available funding can be used more effectively.

The committee's findings will be shared with the Scottish Government in advance of its next budget.

With a change of government nationally the TSI network is keeping an eye out for potential changes to the structure of the UK Shared Prosperity Fund and other national funding programmes.

### **Local strategic partnerships**

#### **Community Wealth Building (CWB) progress**

Following April's Community Planning Partnership (CPP) meeting the CEO presented the report's findings to the four Area Community Planning Groups (ACPG). Subsequently two further groups have been started arising directly from community action to implement parts of the TSI funded report. The first is a group dedicated to identifying ways of making community renewable projects more accessible to local communities in Argyll and Bute. The second is a local group in Helensburgh and Lomond interested in adopting CWB methods for their local place planning aims as well as to meet to identify their ask of the TSI in terms of CWB support.

Finally, the CPP's CWB steering group will meet for a final time in August 2024 to identify how to take forward the specific recommendations contained in April's report.

#### **Community Benefits**

Part of the CWB report outputs was a review of how we approach community benefits arising from major infrastructure schemes.

### **TSI Scotland, contracts, sector support and strategic action plan delivery**

#### **1. TSI National Conference and Scottish Government returns**

The TSI Scotland network held a two-day national conference in Edinburgh in May which was attended by over 120 staff across the two days with speakers from a wide range of organisations including ACOSVO, Centre for Local Economic Strategies (CLES), The Joseph Rowntree Foundation, Social Enterprise Scotland, The Royal Society of Edinburgh and SCVO. ABTSI's CEO led a session on leading in Challenging Times and feedback for the whole conference agenda was well received and it is intended to run the event again pending further funding from the Scottish Government.

### **2. ABTSI strategy development preparations**

Further to the Board's decision in April 2024, the CEO has been working on a plan to deliver a survey and focus groups identifying key local third and social enterprise issues in general for three reasons:-

1. Map and identify the concerns and needs of the sector
2. Use the findings to drive an overarching training, events and networking calendar
3. Use the findings to drive the TSI's new strategy, business plan and a sector led campaign.

### **3. Communities Mental Health and Wellbeing Fund – Year four grant and preparations**

Grant letters for year four (2024-2025) of the Communities Mental and Wellbeing Fund were received and signed in July 2024. As with 2023-2024 funding is broadly the same with £280,979.23 for the fund itself. Work is underway on preparing the schedule including consulting with the sector about the local fund guidance plan. It is anticipated that the fund will be open by the end of September 2024.

### **4. Hustings**

General Election Hustings for Oban and Helensburgh organised by the TSI were held on 24<sup>th</sup> and 26<sup>th</sup> June respectively. They were both very well attended and the Oban hustings was live streamed.

### **5. Argyll and Bute Climate Action Network (ABCAN)**

The TSI supported Argyll and Bute Climate Action Network continues and year two of the seed corn funding programme will be disbursed in September 2024 using the TSO platform. Funding is at a much lower level this year at £10,000.

## **6. Taking Action on Rural Poverty workshop June 2024**

The TSI is on the steering group for the Robertson Trust funded project delivered by the Poverty Alliance – Taking Action on Rural Poverty. As part of their work, they held a sector learning event in June 2024 and the TSI CEO presented a session on how the TSI's networks and community wealth building approaches can support anti-poverty work in Argyll and Bute. It was well attended with over 40 groups represented.

## **7. Work of the Wellbeing Development Manager**

The Wellbeing Development Manager, hosted by the TSI and funded by Macmillan Cancer Support and the HSCP, has continued to work at pace. The synergy with the TSI's work is significant as it involves capacity building third sector groups active in preventative healthcare as well as developing information and support tools such as TSI database and a proposal has been agreed to expand its use as a tool for analysing sector services and capabilities. This will be funded by the project's funders and collaborate with our database manager, Phil Ashby.





### **Community Learning Services update - Celebration Day Event for Adult Learners**

In May over 60 Adult Learners came together in Inveraray from across the different areas of Argyll and Bute to celebrate their learning achievements but more importantly to have the opportunities to travel out with their local areas and to meet up with other Adult learners.

The day consisted of a variety of activities which included creative learning designed for all learners to participate in and encourage social interaction and communication. This, helps learners grasp the bigger picture and become more focused and inspired on what they want from their Learning journey and encourages “Voice participation”.

“Hear My Story” - Some Learners shared personal experiences and were extremely nervous, it took a lot of courage and determination to speak and share their learning journeys including barriers and challenges some have faced over the years. By attending and being supported through Community Based Adult Learning they have been able to move forward and address some of the challenges they have and still are facing today. Learning is not always about learning a subject matter; other factors have an impact such as Health and Wellbeing, Poverty, unemployment, social isolation and a lack of confidence amongst others. To hear these heart-warming stories was empowering for the learners telling them and the learners listening to them. (We have captured them on recordings and photographs and can share them through other channels).

One Adult learning project in Oban is a Music project in Partnership with Hope Kitchen it supports and is inclusive to all people including the homeless, people with alcohol & drug addictions and mental health issues, who need a safe place providing food, shelter and made to feel welcome. Adults can learn to play an instrument or join in through singing. This can be in a group or solo for new and experienced and for those who are not sure but might want to give it a go or just listen. The project’s aim is to address social isolation, health and wellbeing and improve on learning new skills.

Some of the learners took to the “stage” and provided the afternoon’s entertainment sharing their own learning by performing as a “band” and also giving solo performances with a finale of a sing-along for all adult learners to join in they even brought along song sheets they had made.

Learners had the opportunity to meet others and talk about their experiences and share with us through feedback and evaluative comments how they felt and about the support and provision they received. This was collated during the day and turned into a “Wordle” which all received a framed copy of it along with other “take home” goodies (One of the activities was to create and design their own bags) which they all did and were able to put the bag to use to carry home the momentums of the day.

The learners provided positive evaluations and they felt valued and believed that their participation made the event more inclusive. They reported increased self-esteem, confidence, and new friendships. It is vital to create safe, inclusive spaces for learners to work together, share and be creative. Learner involvement is a fundamental principle of CLD practice and this is emphasised in Quality Indicator “Developing the learning offer with learners”. We are promoting Adult Learning Forum/s across Argyll and Bute to encourage the aim of the learners’ voice and the opportunity of expressing their views on adult learning provision. We wanted to increase opportunities for adults to influence our service and to develop the Learner Voice in a more formal way.



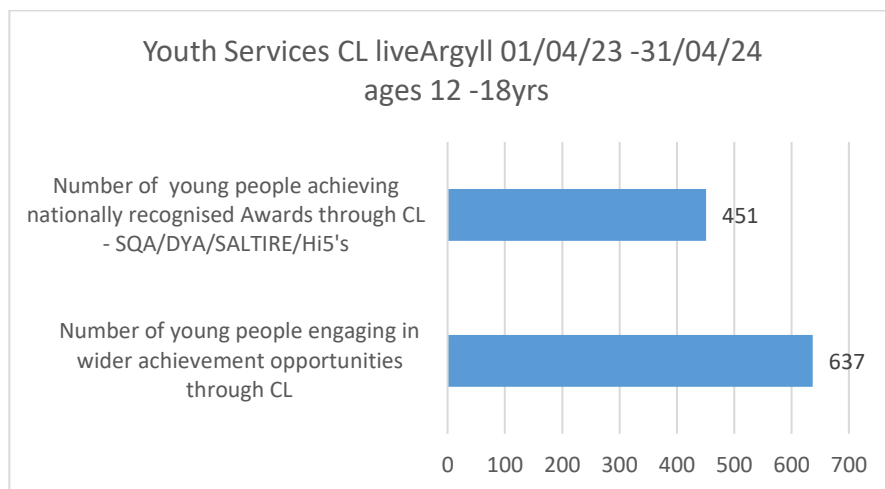
### Community Learning Services – Youth Services School Partnership Programmes

Youth Service Leads work in Schools and Partnership programmes which collaborate with the Scottish Government and other Scottish Attainment Challenge partners to promote the role of youth work in closing the poverty-related attainment gap. We share best practices, support practice development and gather evidence of the impact of youth work on attainment.

In Argyll and Bute in school session 2023-24, Community Learning extended its partnerships with secondary schools significantly. To support the Education Service in broadening the curriculum and offering as wide a range of attainment and achievement possibilities. Community Learning has enabled the achievement of over 450 accredited awards and nearly 500 other awards across eight secondary schools. . Engagement with schools will continue in 2024-25.

The chart below highlights two areas:

- 1) The total accredited, recognised qualifications that were achieved by young people.
- 2) The total number of young people who have actively participated in and accomplished wider learning opportunities.



SQA – Scottish Qualifications Agency

DYA – Dynamic Youth Award

Community Learning looks for all opportunities to assist a young person to maximise on their attainment and achievements: e.g. a young Person achieving an SQA in Young Leadership potentially can also achieve a Dynamic Youth Award and a Saltire Award at the same time.



This page is intentionally left blank





## Alasdair Paisley MSYP - Update August 2024

### 81<sup>st</sup> SYP Sitting

I went to Stirling to attend the SYP sitting, where I underwent training for anti-racism and ending gender-based violence. We also saw other MSYPs put forward motions to the SYP, which included motions on Outdoor learning, LGBTQ+ action, mental health training improvement and more. I also met my committee, called the T.E.R.A committee, which stands for Transport, Environment and Rural Affairs, I am excited to work with them.

### Oban Consultation

Soon after the sitting, I went along with a couple of youth groups to Oban, where I did a consultation alongside one of my colleagues to get an idea of what were the common issues and themes. The general feedback from this consultation was that many young people in Argyll and Bute feel they have very little to do in their area, a few reported bullying, and several are concerned about the amount of litter in towns and roads.

### Next Steps

I am currently setting up another consultation for young people across the area and am planning to visit and consult with local youth groups, and I will focus more on the topics of the Environment and Transport. I shall also attend the next SYP sitting where I can help to contribute the views of local young people. I look forward to soon consulting with larger groups across Argyll, and start to talk with local campaigners and decision makers on the young peoples behalf.

Contact: [alasdair.paisley.msyp@sypmail.org.uk](mailto:alasdair.paisley.msyp@sypmail.org.uk)

This page is intentionally left blank



# Community Contacts: Project Summary and Plan

## October 2018 - March 2024



Funded by



## Our planned outcomes for Argyll & Bute - October 2018 to end of March 2024

- People and carers are better prepared, confident to engage and contribute meaningfully to social care assessments and reviews.
- People and carers feel more informed, listened to, less stressed.
- People and carers can creatively and flexibly plan to achieve personal outcomes including accessing community assets.
- People and carers have increased skills so are better able to manage social care packages.
- People and carers have increased knowledge and understanding of self-directed support principles and options for social care.

## Community Contacts Argyll & Bute

Community Contacts has been offering independent support, information and advice on Self Directed Support (SDS) in Argyll & Bute since October 2013. The project was awarded further funding under Support in The Right Direction (SiRD) for the continuation and development of independent support for SDS between April 2024 and March 2027.

Community Contacts provides service delivery to four distinct localities of Argyll & Bute:

- Mid Argyll, Kintyre, Islay and Jura
- Bute and Cowal
- Oban, Lorn and the Isles
- Helensburgh and Lomond

This means that the Community Contacts Argyll & Bute team works with disperse communities across large geographical areas.

## Community Contacts Argyll & Bute Team currently consists of:

- Four part-time Specialist Community Project Workers, all home based with responsibility for the 4 localities.
- A part-time Community Project Manager.
- Senior management support.
- Total number of hours of service each week is 99.5 hours/ 2.6 FTE.

## Range of activity to offer independent support, information and advice on SDS:

- Helping people to understand the SDS process locally; to both understand their rights but to appreciate the limitations of SDS and public resources.
- Tailored support to understand legislation and the rights and responsibilities this brings.
- Offering one-to-one support to people and carers to develop personal outcomes plans and help to access support services.
- Linking people to make community connections and to develop personal networks (including those not eligible for formal social care resources).
- Providing support to understand the process and ongoing management of a direct payment, and to make connections with other services for more intensive support, when this is needed.
- Assistance to understand Option Two responsibilities and functions.
- Working with partners to share SDS information and knowledge e.g., with advocacy and carers' organisations; with locality based HSCP integrated teams and with both adults and Children and Families' leadership teams.

- Facilitating peer support opportunities with those with an interest in SDS, often in partnership with other organisations e.g., Alzheimer Scotland and carer support services.

Due to the geography and resourcing constraints, Community Contacts continues to offer as much assistance remotely as possible.

## Relationships and joint working

Community Contacts, has positive relationships with cross-sector partners, and receives referrals from Argyll and Bute HSCP and other Council teams, third sector organisations, provider organisations, personal assistants as well as self-referrals.

### Susan's story

Community Contacts Specialist Project Worker, Rachel was introduced to Susan at North Argyll Carers Centre. Susan is a retired nurse and has been providing extensive support for her parents in recent years. Susan found the peer support available via the Carers Centre was invaluable and had 'kept her going' in her role as carer.

When Rachel spoke with Susan, Susan shared insight into her earlier bad experiences of contact with social workers because of being a parent to a disabled child. Due to this, Susan was reluctant to explore the potential of SDS for her parents and in her role as a carer. Susan said she was coping as she employed someone privately to help with caring responsibilities.

Rachel spent time over a cup of coffee with Susan having an outcome focused conversation. Susan agreed to take some information with her on SDS and on Rachel's role with Community Contacts.

Two weeks later, Susan called Rachel; she had been reflecting on their conversation and on the information she had taken away. She concluded that there would be 'no harm' in requesting an SDS assessment for the family and asked Rachel for her help. Rachel contacted the Social Work Department who promptly visited the family, conducted an assessment and offered an SDS budget to help meet everyone's needs.

Susan reported back that she was appreciative of Rachel's gentle approach; her respect, the initial time she gave to her and the space to reach her own decision. Rachel also reflected and noted the power of sharing information and kindness at the right time; how this approach and the information shared enabled Susan to determine her next steps thus upholding her rights. The duration of this support was only over three weeks and was highly effective for Susan. Rachel also reported that this piece of work felt very rewarding and successful and fitted with SiRD Outcome 1.

## National work 2023-2024

Community Contacts continues to work with national partners and organisations based in other local authority areas, to influence change and promote good practice. Recent examples include:

- Membership of the Scottish Government's Personal Assistant Programme Board.
- Contributed to the update of the SDS Statutory Guidance (2022) and the subsequent National SDS Improvement plan alongside Scottish Government, CoSLA, Social Work Scotland, SDS Scotland and InControl Scotland.
- Chaired the review and subsequent publishing of the revised national Framework of SDS Standards.
- Working with SDS and legal partners to update and rewrite the Scottish Personal Assistants Employers'/Personal Assistants' Handbook as an online and printable resource.
- Opened up sessions for partners and citizens to feed into the National Care Service Consultation.
- Practice learning with other Scottish Government funded projects offering independent support, information, and advice on SDS.
- Chair of Self directed Support Scotland, the national membership organisation for those connected with SDS professionally and national delivery partner for Scottish Government.

## Our demographics and referral points

From October 2023 to March 2024, we offered 'casework' (more intensive work) to these numbers of people and families:

Total (with a focus on the primary supported person)	Existing cases	New cases
127	48	79

In same period, we supported the following numbers of people and their carers:

Total (including carers requiring a high degree of support in their own right)	Cared for person	Carers
222	127	95

During this time, we supported the following number of people eligible/not eligible for SDS or awaiting assessment completion:

Total (with a focus on the primary supported person)	Eligible for SDS	Not eligible for SDS	Pre- assessment or waiting for assessment	Don't know
127	11	4	4	8

In this period, the number of people accessing each SDS option was:

Total	Option 1	Option 2	Option 3	Option 4	Don't know
111	75	1	10	23	2



Our demographics (based on casework figures) were:

<b>Number of people (with a focus on the primary supported person)</b>	<b>Age</b>
<b>41</b>	<b>Between 0 and 17 years</b>
<b>34</b>	<b>Between 18 and 64 years</b>
<b>39</b>	<b>65 years or older</b>
<b>13</b>	<b>Don't know</b>

<b>Number of people (with a focus on the primary supported person)</b>	<b>Access Route</b>
<b>62</b>	<b>Local Authority</b>
<b>0</b>	<b>Schools</b>
<b>45</b>	<b>Another third sector organisation</b>
<b>0</b>	<b>Referral by personal assistant</b>
<b>13</b>	<b>Self-referrals and referrals made by friends or families</b>
<b>0</b>	<b>Advertising (web, in paper, or outreach)</b>
<b>7</b>	<b>Don't know</b>

<b>Number of young people supported making the transition to adult life</b>	<b>9</b>
-----------------------------------------------------------------------------	----------

Number of people	Condition(s)
1	Addictions
33	Asperger's or Autism
0	Blind or visual impairment
2	Carers of people living with a condition
2	Carers accessing support for their own personal outcomes
0	Deaf or hearing impairment
10	Dementia
8	Learning disability
11	Learning and physical disability
15	Long-term condition – including chronic pain, neurological conditions and terminal illness
10	Mental ill-health
16	Physical disability
11	Problems connected with ageing
8	Don't know

<b>Total number of people given 'light-touch' advice and information (in addition to our casework).</b>	<b>911</b>
---------------------------------------------------------------------------------------------------------	------------



**A Company limited by guarantee in Scotland:  
SC 236436 Scottish charity: SC 033491**

**National and Registered Office:  
Space, 11 Harewood Road, Edinburgh  
EH16 4NT**

**[www.carrgomm.org](http://www.carrgomm.org)  
[communitycontactsab@carrgomm.org](mailto:communitycontactsab@carrgomm.org)**

This page is intentionally left blank

**Caledonian MacBrayne Update**

**Mid Argyll, Kintyre and the Islands Area Community Planning Group – 28/08/24**

Kennacraig works are progressing well, dredging and fendering work complete with the handover of the South berth back to Calmac on the 8th August - this allowed work to start on the North berth. Work is ahead of schedule with the North berth looking to be completed early January.

This page is intentionally left blank

## **Campbeltown CC Report for MAKI August 24**

### **Jubilee Coastal Path**

The **Jubilee Coastal Path** is now completed. Despite the difficulties in locating the landowner, getting answers from the planning department, sourcing the necessary funding, work started on the path in early January and following the installation of the new bridge the CC held an official opening on 5<sup>th</sup> June.

### **Campbeltown Pharmacy**

912 people responded to the survey by Highland Region Health Board showing the great need for an additional pharmacy within the town. Members of the public continue to complain about the long waiting times to receive their medicines, stock availability etc. The CC would welcome a prompt decision on this.

### **Roads**

Campbeltown CC were delighted to see the resurfacing of the Esplanade, Main Street and various roads within the housing schemes. The CC was happy to provide funding to the **British Legion** to purchase bunting and flags to decorate the town to commemorate the 80th anniversary of the D-Day landings. These, along with the improved roads, the flower beds at the Cross and Hall Street have made the town a much more attractive place for visitors.

This page is intentionally left blank



**Ardrishaig Community Council Partner Update****Mid Argyll, Kintyre and the Islands Area Community Planning Group – 28/08/24**

In relation to the MAKI meeting of 28 August and your requests for agenda items, Ardrishaig Community Council ("ACC") would like to see some follow up from this item from the 1 May 2024 Minutes.

***"Discussion took place around the struggles that community councils faced with attracting new community councillors; ways in which community councils could work together to form caucus arrangements; engagement with the Democracy Matters consultation; high workload of community councillors; difficulties with the level of complex process and regulation around community councils; support available for community councils; and the potential requirement for additional visits to community councils to discuss their concerns."***

As you will know, the planned community council forum was postponed due to the general election and so there has been no opportunity to discuss it at that forum. However, ACC notes the resignation of the Garelochhead CC and the comments made by former councillors about the perceived lack of support from A&B Council and share the concern that more is being asked of community councils with no corresponding increase in financial or human resources. For example, ACC has been invited to submit a Community Place Plan by June 2025 which we are keen to do, but no offer of assistance in achieving this was made. At the same time ACC needs to update its Resilience/Emergency response plan. ACC also spent a lot of time this past winter dealing with a response to the scoping report for the proposed High Brenfield Wind Farm and understands that Low Carbon, the developer, is proposing to apply for planning permission later in the year. At the same time, they have commenced discussions with interested parties around possible community benefit if their application is successful which we need to actively engage in. ACC has also been responding to the SEPA Flooding consultation and the Scottish government Flood Resilience consultation, all of which link into the Place Plan initiative. The volume of work involved for councillors, the majority of whom have day jobs and whose community council work is carried out in their spare time, is very significant.

On top of this, through the Ardrishaig Gala Committee has been organising the Ardrishaig Gala week, which is the largest community event of the year. As was the case last year, whilst we've found individual council staff helpful, the lack of joined up approach at Council level, the fact that event planning seems to be fragmented across different departments, and the fact that it hasn't felt like a supported and collaborative process, has led to much frustration, which we understand to have been shared by the organisers of the Lochgilphead Celtic and Pictish festival.

If the aim of decision makers is to empower local communities and community organisations, and not be a mere "tick the box" exercise, there has to be more thought given to how to support community organisations with meaningful resource allocation. It can't be enough to direct them to webinars or printed materials, as the time taken to wade through these cuts significantly into the time available to them to actually do what's asked of them. And perhaps one often overlooked major headache is that, when external or expert resource is required, CCs don't have the funds to engage professionals without first having to apply for and be successful at obtaining grants. The timelines for submission of applications for grants and decisions as to grant allocations are generally completely different from the deadlines for replying to consultations or, for example submitting plans. So, where funding applications have to be made before a large scale community engagement

exercise can be undertaken so that work can commence on preparing plans or responses to planning applications etc, the mismatch in timing can cut the time available to pull responses or draft plans etc together significantly. We would suggest that the Council needs to be much more pro-active in offering concrete resource and advice, rather than merely acting as a signpost to printed materials, webinars etc. This might require a rethinking of working patterns for some staff who are in a community support capacity to recognise that meetings may need to be held outside normal working hours and that going out into communities and delivering assistance/providing expertise may best be performed within those communities and not from behind the council website.

ACC wants to engage collaboratively on finding a way to work with council staff, other local community councils and organisations on these issues and we think that we are not alone in hoping that an approach can be developed that delivers more support to community councils in helping them serve their communities.

**Argyll & Bute Community Planning  
Partnership  
Area Community Planning Group  
Partnership update  
Date: July 2024**



---

## **Partner update – Public Health**

### **Community Link Workers**

Argyll and Bute Health and Social Care Partnership is pleased to publish the most recent evaluation of the Community Link Working service in Argyll and Bute, which shows positive outcomes from the service for patients, GP practices and our communities. The service started in December 2021 and is provided by Third Sector Partner 'We Are With You'. Community Link Workers recognise that social issues such as debt, relationships, employment, and loneliness affect people's health and wellbeing, and will connect people to sources of support or resources within their community. The service can currently be accessed through referral or self-referral from 12 GP practices across Argyll and Bute.

The evaluation found that the service received 975 referrals since 2021, with the highest number of referrals for mental health and wellbeing; loneliness and isolation; financial advice; and stress management. Community Link Workers were able to work with people to connect them to support, teach self-management and reduce barriers to accessing appropriate services. 90% of people who received the service experienced a positive change in their health and wellbeing.

The service has been developed in line with the modernisation and expansion of services delivered in GP practices, resulting in multidisciplinary teams working together to support people holistically and improve outcomes for patients. Work is currently underway to expand the service and look at how it can be provided in more remote and rural areas, in collaboration with GP practices and those living in those communities. The evaluation paper will be supplied for inclusion in the ACPG papers, it is also available at: [Community Link Working \(CLW\)-4pgs-v3-FINAL \(scot.nhs.uk\)](https://www.scot.nhs.uk/CommunityLinkWorking/CLW-4pgs-v3-FINAL)

### **Suicide Prevention Activity**

In alignment with "Creating Hope Together: Scotland's Suicide Prevention Action Plan 2022-2025," Argyll and Bute HSCP has a project aimed at providing the resources needed to understand and improve mental health, and understanding and preventing suicide. This will include:

- Training provision: from September a number of courses/workshops will be available across Argyll and Bute including; Scottish Mental Health First Aid,

Applied Suicide Intervention Skills Training, “Ask, Tell”, and First Aid for Youth Mental Health.

- A communications plan has been developed to promote signposting to mental health services. We will distribute printed materials and downloadable resources from reliable sources to raise awareness about available support.
- Collaboration with national partners including; Breathing Space, Penumbra, Samaritans, Change Mental Health, and others to disseminate reliable educational resources, training, and support options.
- We will also collaborate with a range of partners in Argyll and Bute including health and social care staff, education staff, debt and money advice services, community justice, addiction services among others. We will also collaborate with private sector businesses to ensure widespread dissemination of mental health resources, suicide prevention training, and crisis support.

### **World Suicide Prevention Day**

We are asking for partners support for World Suicide Prevention Day on 10th September. Let's light up our buildings in purple or teal to raise awareness and show our commitment to preventing suicide and promoting mental health.

Why this matters: World Suicide Prevention Day, established by the International Association for Suicide Prevention (IASP) and World Health Organisation (WHO), focuses on reducing stigma and spreading the message that suicides are preventable. The theme for WSPD 2024-2026, “Changing the Narrative on Suicide,” encourages us to shift from silence to openness and support.

How you can help: By lighting up your buildings, you can help draw attention to this critical issue. The colours purple and teal symbolise support and awareness for suicide prevention efforts.

Get Involved: If you would like to participate in this important initiative, please contact Olena Mishanina at [olena.mishanina@nhs.scot](mailto:olena.mishanina@nhs.scot) to promote your involvement.

Together, we can illuminate the importance of mental health and make a difference in our communities. Thank you for your support!

### **Art of hosting at The Living Well Programme**

The Living Well Programme Board vision is people in Argyll and Bute living longer, healthier, independent lives. The board identified a need to bring together its wide range of partners to explore how we collectively address major issues affecting Scotland’s rural and island communities. They came together in early June at Barmolloch Farm and explored the key questions:

- How can we work together to meet the wellbeing needs of our communities during these times of rising demands and fewer resources?
- How can our shared knowledge and resourcefulness best support the most vulnerable across our rural and island areas?

Using the World Cafe method from the Art of Hosting, appreciative inquiry, the circle-way method, and various other methods, participants discussed these pressing

issues and shared their collective feedback. In collaboration with New Possibilities, a short film was created to showcase the event’s highlights and key findings. You can watch the video at: [Art of Hosting at The Living Well Programme | Rural Social Enterprise Hub \(ruralsehub.net\)](https://www.ruralsehub.net)

### Alcohol and Drug Partnership Update

#### Prevention and Early Intervention

The ADP Support Team has been receiving 6 monthly progress reports on the grants issued in last financial year. 12 applications were successful in receiving grant funding to deliver prevention, early intervention and address stigma. The progress reports have demonstrated the wide range of fantastic work that has been carried out across Argyll and Bute. The ADP funding supported initiatives for children and young people, families affected by alcohol and drugs and people in recovery.

#### Families Affected by Alcohol and Drugs

Scottish Families Affected by Alcohol and Drugs (SFAD) have been carrying out phase one of the commissioned work in Argyll and Bute to support implementation of Whole Family Approach. The high level goal of this work is to grow a model of family support that is connected and effective, utilises community assets, sustains, strengthens and up skills communities to create a cohesive and effective Whole Family Approach.

Phase one has involved sharing information about the work, building relationships and engaging stakeholders. As part of the initial phase of this project engagement events were held in Inveraray to facilitate conversations, identify opportunities to strengthen support for families, in ways that work for both the families themselves and the dedicated people in the services. The events looked at why families affected by alcohol/drug harm need support, who do we mean by ‘families affected’, what does support look like and where stakeholders see opportunities to improve support. The engagement events, together with an audit of services available in Argyll and Bute will help shape the partnership plan and identify people and organisations that can be further involved in the Whole Families Approach.

### Medically Assisted Treatment Standards

Reporting Year	Argyll & Bute										
	MAT 1	MAT 2	MAT 3	MAT 4	MAT 5	MAT 6	MAT 6 & 10	MAT 7	MAT 8	MAT 9	MAT 10
2022	Red	Red	Red	Amber	Amber	N/A	N/A	N/A	N/A	N/A	N/A
2023	Amber	Provisional Green	Amber	Amber	Amber	Red	N/A	Provisional Amber	Amber	Red	Red
2024	Green	Green	Green	Green	Green	N/A	Provisional Green	Provisional Green	Provisional Green	Provisional Green	N/A

**RAGB colour legend**

- Red
- Provisional Amber
- Amber
- Provisional Green
- Green

2022 – MAT 6 to MAT 10 were not assessed  
 2023 – MAT 6 and MAT 10 were assessed separately  
 2024 – MAT 6 and MAT 10 were assessed jointly

The National Benchmarking Report was published in July and provides an

assessment of the progress on implementation of the MAT Standards 1 to 10 as of April 2024.

[National benchmarking report on the implementation of the medication assisted treatment \(MAT\) standards: Scotland 2023/24 revised 30 July 2024 - National benchmarking report on implementation of the medication assisted treatment \(MAT\) standards - Publications - Public Health Scotland](#)

Further resources that have been produced includes a short video that provides the perspectives of the MAT Standards by a person with lived experience of substance use, a family member and a member of staff working in a service and the map that shows the progress of ADPs in Scotland to meet the MAT standards.

Access to these resources can be obtained using the link below:

<https://publichealthscotland.scot/our-areas-of-work/health-harming-commodities/substance-use/treatment/medication-assisted-treatment-mat-standards/resources/>

### MAT 8 Groups

The Argyll and Bute MAT 8 Group, formed in 2023 has representation from Lomond and Argyll Advocacy Service (LAAS), Argyll and Bute Council Welfare Service, Argyll and Bute Council Housing, Carr Gomm, Argyll and Bute Drug and Alcohol Recovery Services (DARS), the Cowal Response Service and With You. The Group was established to implement MAT Standard 8, which is; all people have access to independent advocacy and support for housing, welfare and income needs. Priority Actions agreed include trauma informed practice, a service resource list, and strengthening networks to use the referral pathways.

A leaflet explaining the services in Argyll and Bute in relation to MAT 8 and a pathways diagram has been produced and a “Meet the MAT 8 Team” Webinar was held in June to help raise awareness MAT standards. The MAT 8 leaflet can be viewed at this link:

[https://www.argyllandbuteadp.info/img/MAT8\\_leaflet\\_version\\_5\\_\(3\).pdf](https://www.argyllandbuteadp.info/img/MAT8_leaflet_version_5_(3).pdf) .

### Recovery Orientated Systems of Care (ROSC)

Argyll and Bute Community Learning and Development colleagues are delivering work to support ROSC communities in Argyll and Bute. This newly developed program aims to provide a dedicated resource to strengthen ROSC communities and ensuring their input to ADP plans and priorities.

### REPORT AUTHOR AND CONTACT

Author Names: Rory Munro, Health Improvement Lead & Laura Stephenson, Alcohol and Drug Partnership Coordinator.

Email: [nhsh.abhealthimprovement@nhs.scot](mailto:nhsh.abhealthimprovement@nhs.scot)

# Community Link Working (CLW) in Argyll and Bute



## What do Community Link Workers do in Argyll & Bute?

The CLW service works directly with patients to enhance their wellbeing, with the aim of addressing the wider determinants of health, tackling financial exclusion and focusing on populations from the most deprived areas, helping them access services and connect with third sector providers.

- ✓ CLWs focus on addressing the underlying causes & stressors that negatively impact the health & wellbeing of the individual;
- ✓ follow a person-centred social prescribing approach;
- ✓ establish effective pathways for improved service access;
- ✓ foster professional links with public health services;
- ✓ collaborate closely with GP practices;
- ✓ work to raise awareness of social prescribing;
- ✓ identify & address gaps in community provision.

**Argyll & Bute's  
CLW Contract**  
Dec 2021 to Dec 2024\*

14 of 32  
GP practices  
involved

3.6 WTE  
Community  
Link Workers

975  
referrals

84%  
engagement  
rate

Watch our video [https://www.youtube.com/watch?v=FzTAdEAh6\\_4](https://www.youtube.com/watch?v=FzTAdEAh6_4)

## Ways to access Argyll & Bute's CLW Service

**Self referral OR be referred** by any member of the primary care team (GP, nurse, pharmacist, dentist, or optician).

Referrals & case management occur through integration of GP Vision systems using Elemental software for social prescribing.

(Practices using EMIS systems can access Elemental via a web-based process.)



\*Data Dec 2021 to Mar 2024



## Argyll & Bute's CLW model

Argyll and Bute HSCP has contracted the independent provider 'We Are With You' to deliver the CLW service for the region.

# we are withyou

**Strategic selection** of GP Practices based upon the Scottish Index of Multiple Deprivation (SIMD) deciles. **Focusing on areas of higher socioeconomic deprivation** (living within decile 5 and under).

**CLW Service based within GP practices.** CLWs work directly with patients to navigate & engage with wider community services, fostering a person-centred approach.

Aligns with overarching goal of **addressing health disparities & catering to individuals facing complex socioeconomic challenges.**

**Service includes** diverse approaches to assess individuals' health & wellbeing needs, collaborate on a customised plan to encourage self-management, and provide guidance to access relevant community services

## Face-to-face or telephone sessions

Avg. session length:  
**60 mins.**

No. of sessions tailored to individual need

**Motivational interviewing** to assess individuals' needs

**MAP** (Motivation, Action & Prompts) health behaviour change model to structure behavioural change consultations

**Plan of action designed** with the individual based on outcomes of above sessions, with patients referred to appropriate community services, third sector organisations, & financial support services, etc.

**CLWs work collaboratively to create a customised plan** to support clients with their underlying issues & client circumstances.

As CLWs engage with clients they often uncover a complex web of **interconnected problems & challenges** through holistic assessment.

CLWs play a **pivotal role** in connecting clients to appropriate services, through **signposting & providing support to reduce any barriers** in reaching out to them.





## Reasons for referrals & social prescriptions\*

52%	18%	15%	13%
Mental health & wellbeing	Loneliness & isolation	Financial advice	Stress management

180-250  
Social prescriptions per quarter

Housing & essential needs	Relationship breakdown	Substance misuse	Family support
Employment & training	Disability	Pain management	
Weight management	Learning disability	Long-term condition management	Carer
Sleep support	Bereavement	Physical activity	

\*Data listed for Apr 2023 to Mar 2024



**The outcome of the service is evaluated for each patient using the Short Warwick-Edinburgh Mental Wellbeing Scale (SWEMWBS).** The survey is administered at the initial session, and again at the conclusion of the final session.



## The Results

90%  
of those who completed the SWEMWBS experienced a positive change in their health & wellbeing

A high level of change was found across all respondents, with a change of:

**+5.08** points on the SWEMWBS scale

(A change of between 1 to 3 points on the SWEMWBS scale meets the threshold for statistically significant change.)

Note: Where clients attend only 1-2 sessions, it is too short a timescale to measure change on the SWEMWBS. Also, some do not attend their final session, meaning they do not complete an exit SWEMWBS. The above results are based upon the 58% of clients who have left the CLW service having completed an initial and exit SWEMWBS survey.

\*Shah, N., Cader, M., Andrews, W. P. et al., Responsiveness of the Short Warwick-Edinburgh Mental Wellbeing Scale (SWEMWBS): evaluation a clinical sample. Health Qual Life Outcomes 16, 239 (2018). <https://doi.org/10.1186/s12955-018-1060-2>



## Client Feedback

'The Links Worker was my lifeline.'

'If it wasn't for the [service], I wouldn't be on this journey to better myself and move on from the past [...] that has been haunting me for years.'

'Definitely feel that having the link worker support me and help me find the correct resources has made a huge difference and achieved so much. I am very grateful for the time, effort and compassion that was shown to me and I feel like a lot of people would really benefit from the same experience I had.'

'I felt that pills on their own were not the answer to my problems.'

'I was feeling frustrated by answers of others' to my housing problems, but [the CLW] instilled a confidence I thought I'd lost & was concise & professional in handling the housing issues I had.'

'I have Dr X to thank for the best referral any doctor has given me. The CLW allowed me to talk, get upset, and be non-judgemental. I'd never have thought 4 months ago I'd have improved so much.'

'I felt I had an ally navigating lots of things I could not have done alone. An invaluable resource. Dignified [...]. I felt listened to & understood regarding my difficulties, as they are hidden ones.'

'It has certainly helped me through a very dark time in my life.'

## GP Practice Feedback

Practices find the CLW service 'invaluable' & 'very helpful'.

They also value the flexibility of the service e.g. being able to do house visits.

Recognised some challenges with embedding the service as it was strange having a member of staff present who wasn't employed by the practice, but this has now largely been overcome.

The ability for anyone in the practice to refer is valued, as is the option to self-refer.

Also, the referral process is easy.

Practices reported the service was 'a good service', 'well established' & 'vital'.

'I am really pleased with the availability of the Live Well With Pain group.'

'The Link Worker has an excellent knowledge of services available to patients dealing with social problems, taking work off GPs & other practice staff.'

'CLW 'X' is worth their weight in gold. [...] We don't want to lose this service.'

## CLW Feedback

Perceptions of integration varied between areas and integration was a challenge when CLWs worked remotely from more rural practices.

However, overall, feedback was very positive from CLWs who felt welcomed in practices and enjoying being able to make a difference as part of the practice team.

### **Analogue to Digital Switchover and Telecare**

All telephone lines within the UK are migrating from traditional copper analogue lines to digital ones and the deadline for this is June 2025. This is led by industry (the telephone providers) due to the costs of maintaining the analogue lines. The original deadline was for December 2025, however, BT have extended this deadline to the 31<sup>st</sup> January 2027. It is important to note though that the other telephone providers have not extended the 2025 deadline, just BT.

The switch to digital lines has an impact on telecare and we need to swap over all analogue devices to ones that are compatible with a digital telephone line (broadband) or which operate over the mobile signal. It is important to note that at this time, connection over broadband is not yet possible as the technology at the supplier end is not yet able to connect in this method. We expect this to be operational in the coming months but this is not something that we have control over.

We have a programme to swap over all analogue units with digital ones and are currently rolling this out, which will happen over the next 18 months. We are continuing to focus on those who have already moved onto a digital line and those who live in areas of very good mobile signal. 46.5% of all clients in Argyll and Bute currently have a digitally capable telecare device. This currently breaks down as follows:

- Bute – 62%
- Cowal – 53%
- Helensburgh and Lomond – 45%
- Islay and Jura – 35%
- Kintyre – 38%
- Mid Argyll – 48%
- Oban and Lorn – 37%
- Mull – 25%
- Tiree, Coll and Colonsay – 60%

We have mapped out every telecare client in Argyll and Bute against the Ofcom mobile signal checker to make sure that we are putting in the right solution at the right time for clients. For our telecare clients who live in areas of poor mobile signal, we are deliberately not switching analogue units at this time until a connection over broadband is available to ensure that telecare clients are still able to receive a working telecare service.

If people do go to a digital line but live in an area with no mobile signal, we have a work-around solution that enables them to still have telecare whilst we await connection via broadband/the digital line. This is currently being utilised by 17 clients

across Argyll and Bute. However, there have been a couple of occasions where this has failed (with Sky customers) and as a result, we are no longer able to provide a telecare service until connection over broadband is possible.

BT have committed to not switching vulnerable customers including the elderly and telecare users until the end of the switchover period or until we can confirm to BT that the client has a working digital telecare solution in place. Like other local authorities/HSCPs across Scotland, we have signed a Data Sharing Agreement with BT so that they can ringfence the phone numbers of telecare clients and ensure they are not migrated ahead of schedule. Our advice to anyone at this time who lives in an area of poor mobile signal and requires telecare is to tell BT that they require an analogue line for telecare as the mobile signal is poor and that they require to be left until last in terms of migrating over to a digital line.

We communicate regularly through newsletters to all telecare clients and ask them to make us aware if they move to a digital line. When it comes to changing the device over to a digital one as part of the roll-out, the TEC team will be in contact with the individual or their families where appropriate to make the arrangements to switch the device in advance.

For people who live in an area of poor mobile signal and where there are no current plans for fibre broadband, BT have recently launched a new product which utilises the copper line from the exchange to the property and the digital switch occurs within the exchange. This was launched in March 2024 and BT have acknowledged that this is currently planned to be a temporary solution, (current end date is 2027). We have asked BT what the solution will be once this date has passed with no answer as yet.

We will continue to support both analogue and digital telecare devices for as long as required and will not be insisting that people have to be on a digital line in order to receive telecare if they still have an analogue line in the property.

Our key ask of all partners supporting telecare clients is to:

- Inform the team if someone has moved to a digital line so we can ensure their telecare is working – 01546 605517
- Remind telecare clients to do a monthly test call to ensure it is working and let us know if any issues
- Ask clients to ensure the telephone provider knows they have telecare to try and avoid any forced migrations unless the client wishes to move to a digital line

**Samantha Somers**

TEC Lead, [Samantha.somers@argyll-bute.gov.uk](mailto:Samantha.somers@argyll-bute.gov.uk)

June 2024

# Scottish Government Place Directors

Rachael McGruer  
Place Director, Argyll and Bute

# Role of Place Directors

- ▶ To understand how public services can best work together and support partners to work with communities across Scotland. Place director responsibilities include:
  - communicating the Scottish Government's priorities to partners;
  - supporting and promoting activity informed by local priorities;
  - becoming a trusted link between local partners and the Scottish Government ;
  - demonstrating the Scottish Government's commitment to systems leadership and gathering insights on this approach at a local and national level;
  - supporting Scottish Government activity in local areas, such as ministerial visits and travelling cabinets; and
  - promoting learning from their role across the Scottish Government.

# History

- ▶ Place Directors have existed since 2008. Prior to 2022 they were known as Location Directors.
- **2007-2011:** Location Directors were responsible for providing advice, support and challenge to CPPs and partners on the development and delivery of Single Outcome Agreements (SOAs) linked to the [SG-COSLA Concordat](#) of 2008.
- **2011-2016:** Location Director involvement with CPPs increased following the SG-COSLA [Statement of Ambition](#) in 2012, which placed community planning at the heart of public service reform. This followed the publication of the [Christie Commission report](#) and [Scottish Government response](#) in 2011.
- **2016-2022:** Location Directors continued to play an important role in CPP activity as new statutory expectations on community planning following the [Community Empowerment \(Scotland\) Act 2015](#) and accompanying [statutory guidance](#) which focused on partnership working to deliver on local priorities.
- **2022-present:** Location Directors became Place Directors in 2022. In 2023, the Local Government, Housing and Planning Committee conducted an [inquiry into community planning](#) and the Verity House Agreement was finalised.

# Personal Involvement

- ▶ Direct engagement with Chief Executive, Argyll and Bute Council
- ▶ Attendance at CPP meetings
- ▶ Supporting visits - Permanent Secretary; Travelling Cabinet



# Personal Reflections

Questions?



# Update on Food Share Hub for Mid Argyll

MAKI ACPG

August 28<sup>th</sup> 2024

Kim Ritchie, Trustee.  
Moving On Mid Argyll

# Background

- Three charities currently addressing food poverty and food waste in Mid Argyll
- MOMA, MAYDS and Snowdrop Centre working together to set up a Food Share Hub
- Survey of local retailers, general public, partners and Job Club users gave insight and direction
- Agreement to raise funds and run a one-year pilot
- MAYDS have provided premises in central Lochgilphead FOC
- More detail is available in paper submitted to April meeting

# Cost Estimate for 1 year pilot

# Funding and Support

- Grant Funding raised

- Ventient A'Chruach Community Fund £23000
- A&BC Sustainable Communities Fund £2500
- ACHA Community Action Fund £500

- Goods and Services provided FOC

- MacLeod Construction Door/window
- Travis Perkins Timber
- Co-Op Shelving and installation
- ACHA Kitchen furniture
- Jewsons Wall and Floor paint

- ...not forgetting stock donated by the public!

# Timing Plan

- Three-month slippage on building work from original estimate
  - Builders now on site
  
- Recruitment of Keith Evans as Coordinator completed
  - In post 12<sup>th</sup> August

- Latest estimate

- |                                        |                  |
|----------------------------------------|------------------|
| • Building work completed              | End August       |
| • Call for volunteers to paint         | Early September  |
| • Paint and Fit out                    | September        |
| • Volunteer training and PVG clearance | Aug/Sept         |
| • Opening                              | October/November |

# Work in Progress

**3<sup>rd</sup> August**



**13<sup>th</sup> August**





# Proposed Way of Working

- Opening Hours
  - Flexible to meet demand
  - Start with one morning, one afternoon and one evening
  - Plan to be put in place for emergency access
- Open for anyone to visit without referral
  - Free but donations accepted
  - Continue preparation of food parcels for referred clients if necessary
  - Put a system in place for delivering food to clients in outlying areas
- Provide additional support
  - Invite Councillors, CAB, ACHA, ALI Energy etc to hold 'surgeries'
  - Direct clients to these and other services as appropriate
  - Tea and biscuits!
- 3 staff on duty – Coordinator, one volunteer, one Workrite trainee
  - All will be Food Hygiene trained and PVG cleared

# Any Questions?

---

**Argyll and Bute Community Planning Partnership****Mid Argyll, Kintyre and the Islands Area Community Planning Group**

28th August 2024



---

**Water Safety Scotland communication toolkits**

---

**Summary**

Water Safety Scotland has produced communication toolkits for use in developing people's understanding and awareness of the danger of open water and enabling safe participation in water-based activities.

**1. Purpose**

The toolkits are attached as an appendix to allow ACPG partners to promote water safety for kayaking/canoeing and stand-up paddleboarding. These toolkits were also shared recently with members of the Partnership Approach to Water Safety (PAWS) Argyll and Bute group.

**2. Recommendations**

Members of the Area Community Planning Group are asked to note the water safety communications toolkits.

**3. Background**

Thematic communications toolkits have been developed by Water Safety Scotland and shared with partners on the local PAWS Group and Education Scotland, to promote safety and awareness around specific water-based activities.

**4. Detail**

Water Safety Scotland in conjunction with Paddle Scotland have developed communication toolkits to promote safe participation in stand-up paddleboarding and kayaking/canoeing. These toolkits are attached as an appendix and can be shared and utilised as required to enhance awareness of water safety around the coastline of Argyll and Bute and on our inland waters.

**5. Conclusions**

Members of the Area Community Planning Group are asked to note the toolkits for use in promoting water safety for kayaking/canoeing and stand-up paddleboarding.

**6. CPP Outcomes**

**Does your report relate to any of the following:**

<b>Outcome</b>	<b>Tick as appropriate (✓)</b>
Community Wellbeing	✓
Housing	
Transport Infrastructure	

**For further information please contact:**

[cppadmin@argyll-bute.gov.uk](mailto:cppadmin@argyll-bute.gov.uk)



## Water Safety Scotland

### Stand Up Paddleboarding 'mini' toolkit 2024

Stand Up Paddleboarding (SUP) is a monthly topic within Water Safety Scotland (WSS)'s prevention toolkit and features in May but can be used across the year, as appropriate.

#### Key message:

Scotland's seas, lochs and rivers are enjoyed by a wide range of people for exciting activities– but it's vital we know how to enjoy the water safely. It's always best to be prepared before doing the sport.

To do this, follow the [SUP water safety code](https://www.watersafetyscotland.org.uk/advice-hub/activity-safety/stand-up-paddleboarding-sup/) which contains advice specific to the activities of Stand Up Paddleboarding.


**Website link:** <https://www.watersafetyscotland.org.uk/advice-hub/activity-safety/stand-up-paddleboarding-sup/>

#### Assets

Specific assets have been created for this package. These include:

- Social media assets (detailed below)
- SUP safety video of key advice that can be shared across social media

#### Suggested social media posts:

<p>Be aware of offshore winds. Avoid launching on your paddleboard in windy conditions. Follow the SUP water safety code found here: <a href="https://tinyurl.com/2s3t2a4x">https://tinyurl.com/2s3t2a4x</a> #DrowningPrevention</p>	
<p>Check your kit before you launch on your paddleboard. Remain safe whilst stand up paddleboarding by following the water safety code: <a href="https://tinyurl.com/2s3t2a4x">https://tinyurl.com/2s3t2a4x</a></p>	
<p>Interested in Stand Up Paddleboarding? Get involved in this fun activity and attend an approved Paddle Scotland course #WaterSafety</p>	

<p>Offshore winds can lead to being led out further into deeper water when paddleboarding. Check the direction of the wind before heading out onto the water. Avoid launching in windy conditions.</p> <p>#DrowningPrevention</p>	
<p>Safety is the key to having fun whilst stand up paddleboarding. Follow our SUP water safety code to get the best out of your paddle: <a href="https://tinyurl.com/2s3t2a4x">https://tinyurl.com/2s3t2a4x</a></p> <p>#DrowningPrevention</p>	
<p>Whether you are a keen paddler or a new lover of the sport, be aware of safety by following our SUP safety code: <a href="https://tinyurl.com/2s3t2a4x">https://tinyurl.com/2s3t2a4x</a></p> <p>#DrowningPrevention</p>	

You can check our brand-new video, starring Calum McNicol from Paddle Scotland, who discusses the key advice to help keep you safe whilst Stand-up Paddleboarding.

You can access the new video online here: <https://youtu.be/cwLUR-7Gynw>



**Water Safety Scotland**

**Kayaking and Canoeing ‘mini’ toolkit 2024**

Kayak and Canoe safety is a monthly topic within Water Safety Scotland (WSS)’s prevention toolkit and features in May but can be used across the year, as appropriate.

**Key message:**

Kayaking and Canoeing are both popular recreational and competitive sports and can offer adventure, exercise, and fun, as well as a chance to explore nature. Its best to always be prepared before doing the sport.

To do this, follow the [Kayaking and Canoeing Water Safety code](https://www.watersafetyscotland.org.uk/advice-hub/activity-safety/kayaking-canoeing/) which contains advice specific to the activities of kayaking and canoeing.

**Website link:** <https://www.watersafetyscotland.org.uk/advice-hub/activity-safety/kayaking-canoeing/>

**Assets:** Specific assets have been created for this package. These include:

- Social media assets (detailed below)
- Kayak and Canoe safety video of key advice that can be shared across social media

**Tweets/X/FB posts**

<p>Prepared to paddle? Make sure you are aware of your surroundings, the condition of your equipment, and the weather conditions before you launch. The key to safe canoeing or kayaking is to follow the water safety code. #DrowningPrevention</p>	
<p>Whether you are going kayaking or canoeing make sure you follow the water safety code. If you get into an emergency, call 999 #WaterSafety #DrowningPrevention</p>	
<p>Before launching, ensure you have a mobile phone in a waterproof pouch in case of emergency. This will make your kayaking/canoeing experience safer. #DrowningPrevention.</p>	

Make sure to check the wind direction and speed before launching. Be aware of offshore winds. Stay aware of weather conditions by checking the forecast before you set out. Avoid launching in windy conditions.  
#DrowningPrevention



You can check our brand-new video, starring Calum McNicol from Paddle Scotland, who discusses the key advice to help keep you safe whilst canoeing or kayaking.

You can access the new video online here: <https://youtu.be/xUVh2Wx6eHU>

Please also remember that if you plan to buy second hand equipment – you can read our key advice here: <https://www.watersafetyscotland.org.uk/media/p5fl3icv/wss-second-hand-advice.pdf>